



ENVISION 2045

Collier MPO



DECEMBER 13, 2019 --- MPO BOARD

COLLIER MPO LONG RANGE TRANSPORTATION PLAN

2045 LRTP ZONAL DATA – 2045 SOCIOECONOMIC DATA FORECASTS

2019

2020



PROJECT KICK OFF

- ✓ PIP
- ✓ Planning session
- ✓ Project Schedule
- Adviser Network
- Targeted Organizations & Key stakeholder interviews
- Collier Staff Working Group



MPO Board & Committees



PHASE I EXISTING CONDITIONS ANALYSIS & GOALS

- ✓ Vision, Goals & Objectives
- ✓ Performance Measures & Targets
- ✓ **2045 SE Forecasts**
- ✓ **D1-RPM Validation**
- ✓ Address FDOT Guidance on ACES



MPO Board, Committees & Public Open House #1
Visioning Concepts



PHASE II SCENARIO PLANNING

STAKEHOLDER OUTREACH

- ✓ **Land Development**
- ✓ Transit & Travel Demand
- ✓ E+C Network
- ✓ Projects Selection
- ✓ Prioritization Criteria



MPO Board, Committees & Public Open House #2
Project Prioritization



PHASE III NEEDS & COST FEASIBLE PLAN

- ✓ Needs Plan
- ✓ Revenue Projections
- ✓ Cost Feasible Plan
- ✓ Environmental & EJ Screening



MPO Board, Committees & Public Open House #3
List of Projects



PHASE IV FINAL LRTP

- ✓ Final program of projects
- ✓ Draft LRTP
- ✓ Final LRTP
- ✓ Project close out



MPO Board, Committees & Public Open House #4



LRTP Model Development - Deliverables & Deadlines

FDOT DELIVERABLES:

- **2015 Base Year Data**
due to MPOs by November 30, 2019

MPO DELIVERABLES:

- **2045 Socio-Economic (SE) Forecasts**
due to FDOT by January 15, 2020

Agenda Item

Endorse: 2045 SE Zonal Data



JACOBS

Collier 2045 Long-Range Transportation Plan **2015 and 2045 Socio-economic Data**

PREPARED FOR: Collier MPO
PREPARED BY: Jacobs
DATE: 12/03/2019 *DRAFT*

Introduction

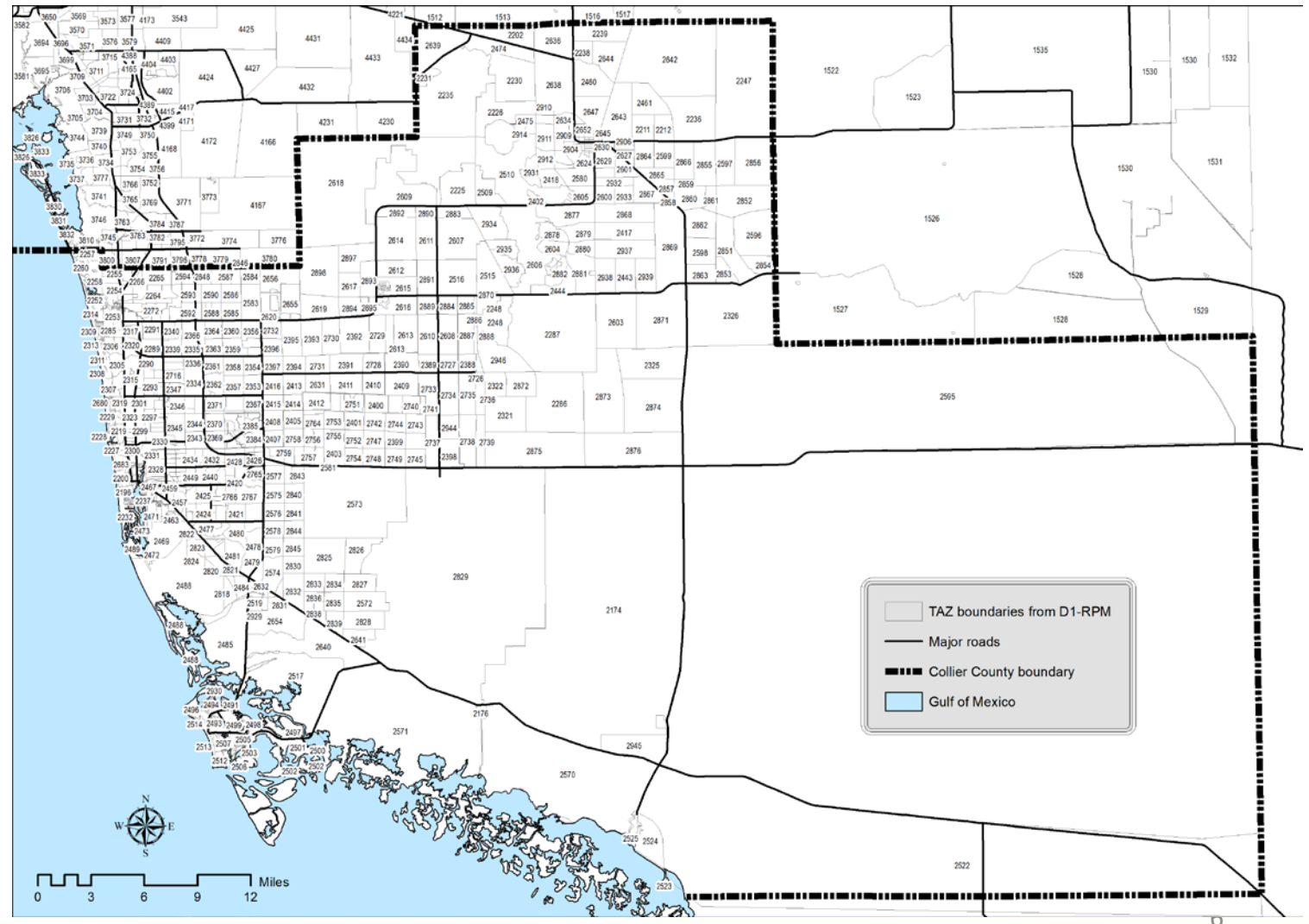
The Collier MPO is in the process of updating the previous (year 2040) Long-Range Transportation Plan (LRTP) to a new planning horizon year of 2045. To support the update effort by all MPOs in District One, the Florida Department of Transportation (FDOT) is updating its 2040 regional planning model to the year 2045. This model is referred to as the D1-RPM.

2015 (base year) socio-economic data

- 2015 data will be used to 'validate' FDOT's regional travel model for District One
- 2015 data has been prepared primarily by FDOT
- FDOT has modified its 2015 data to reflect population distribution in CIGM (Collier Interactive Growth Model)

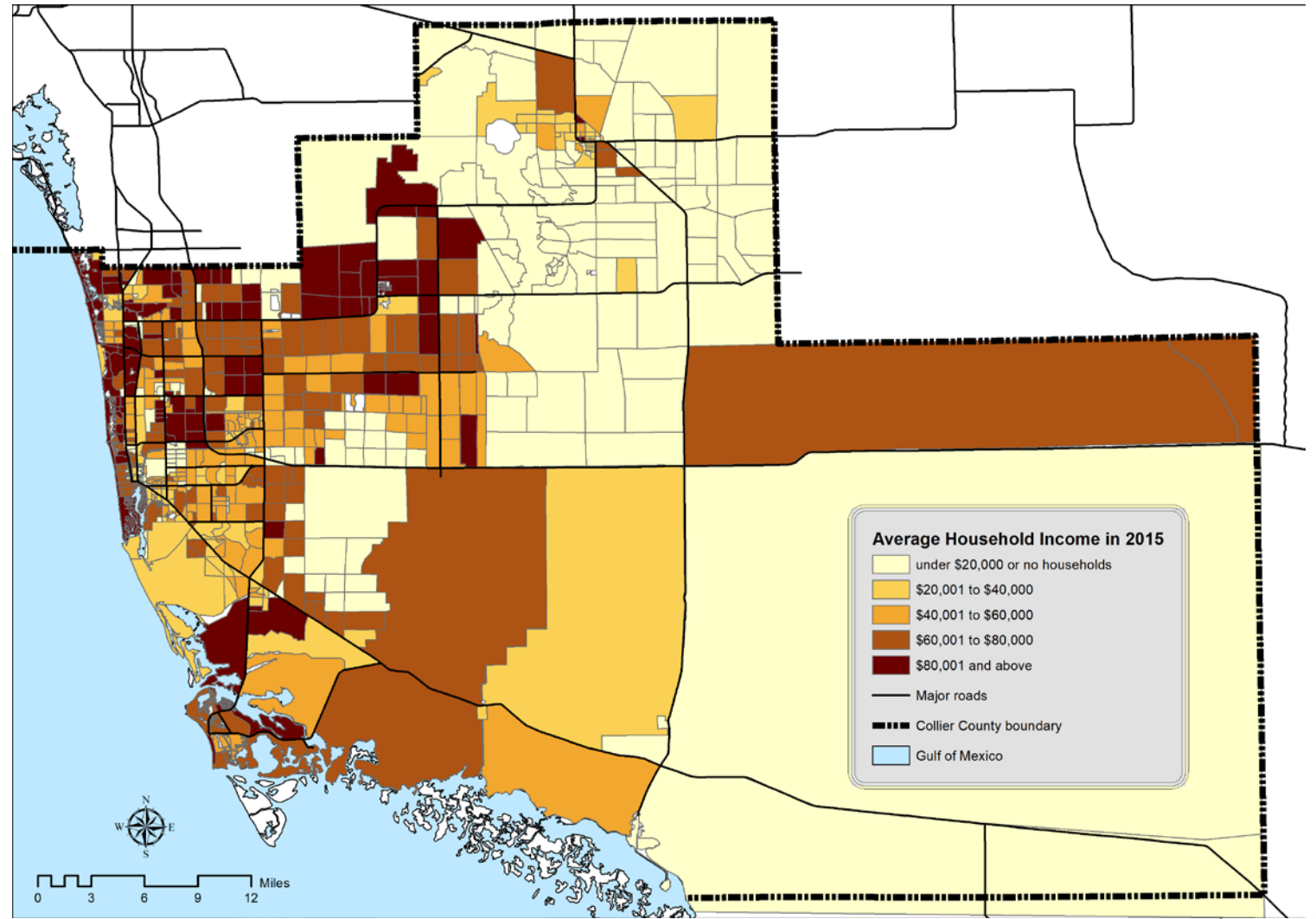
2015 (base year) socio-economic data

TAZ boundaries



2015 (base year) socio-economic data

Household income



2045 (forecast year) socio-economic data

Advantages of using 2045 CIGM forecast:

*Uses sophisticated locally generated data
instead of generic county-level data from BEBR*

*CIGM data was prepared at the TAZ level;
BEBR data would have to be disaggregated to TAZs*

*Keeps MPO planning in sync with other
Collier County planning efforts*

Advantages of using 2045 BEBR medium projection:

*Follows past practices by the Collier MPO
when preparing long-range transportation plans*

*Complies with Policy 4.9 in Collier County's
Growth Management Plan*

Meets minimum requirement in state law

*Most other MPOs use BEBR projections
(very few have locally generated forecasts)*

2045 (forecast year) socio-economic data

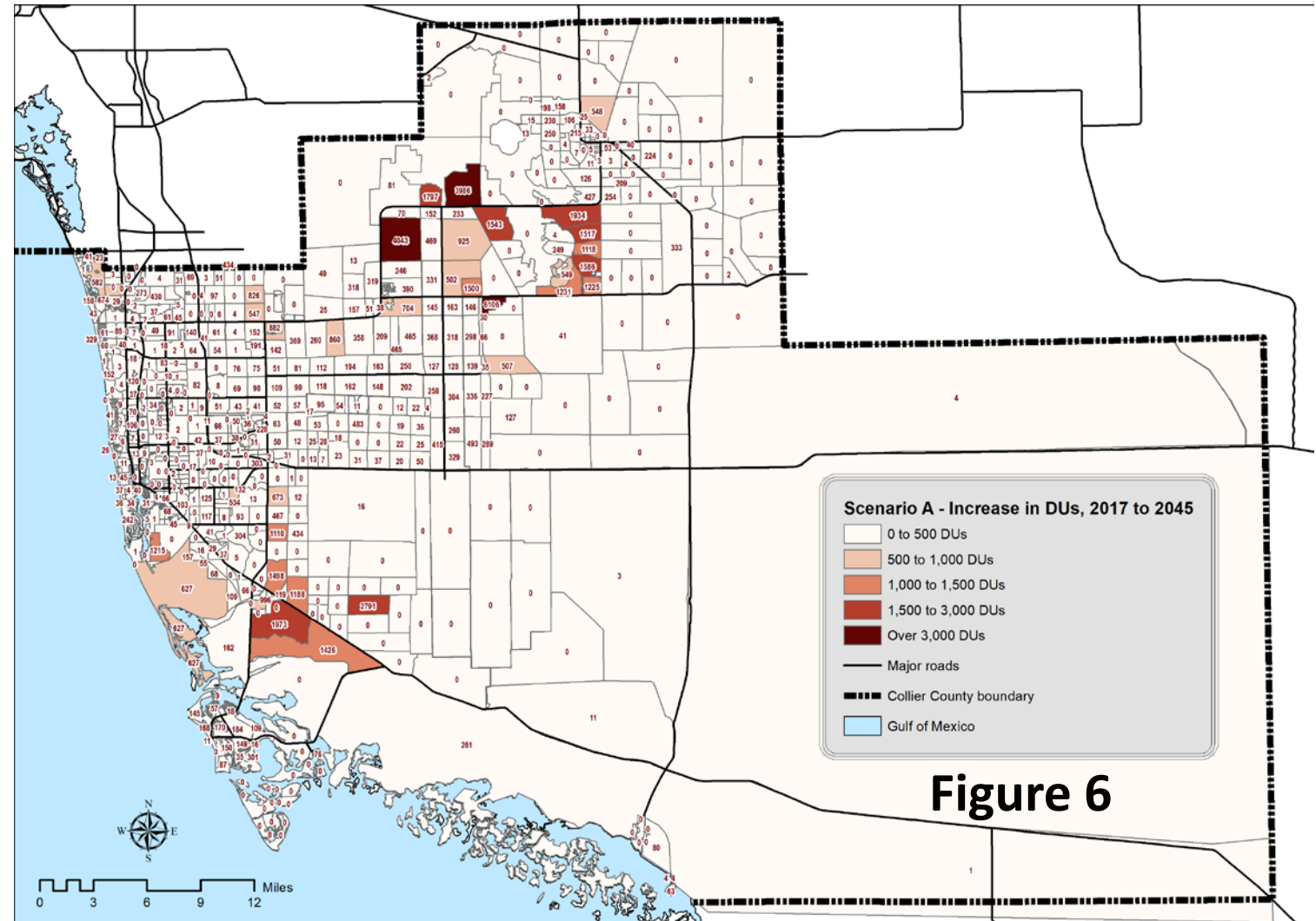
Scenario A (CIGM 2045) will use the 2045 forecasts for population, housing, employment, schools, and hotel produced by CIGM (559,410 residents).

Scenario A will be used internally by the MPO's consulting team to test the full CIGM forecasts in the travel model and identify any potentially additional transportation needs.

Scenario B (BEBR Medium 2045) will modify the CIGM forecasts so that the county-wide population total will match the most recent BEBR medium projection for 2045 (516,100 residents).

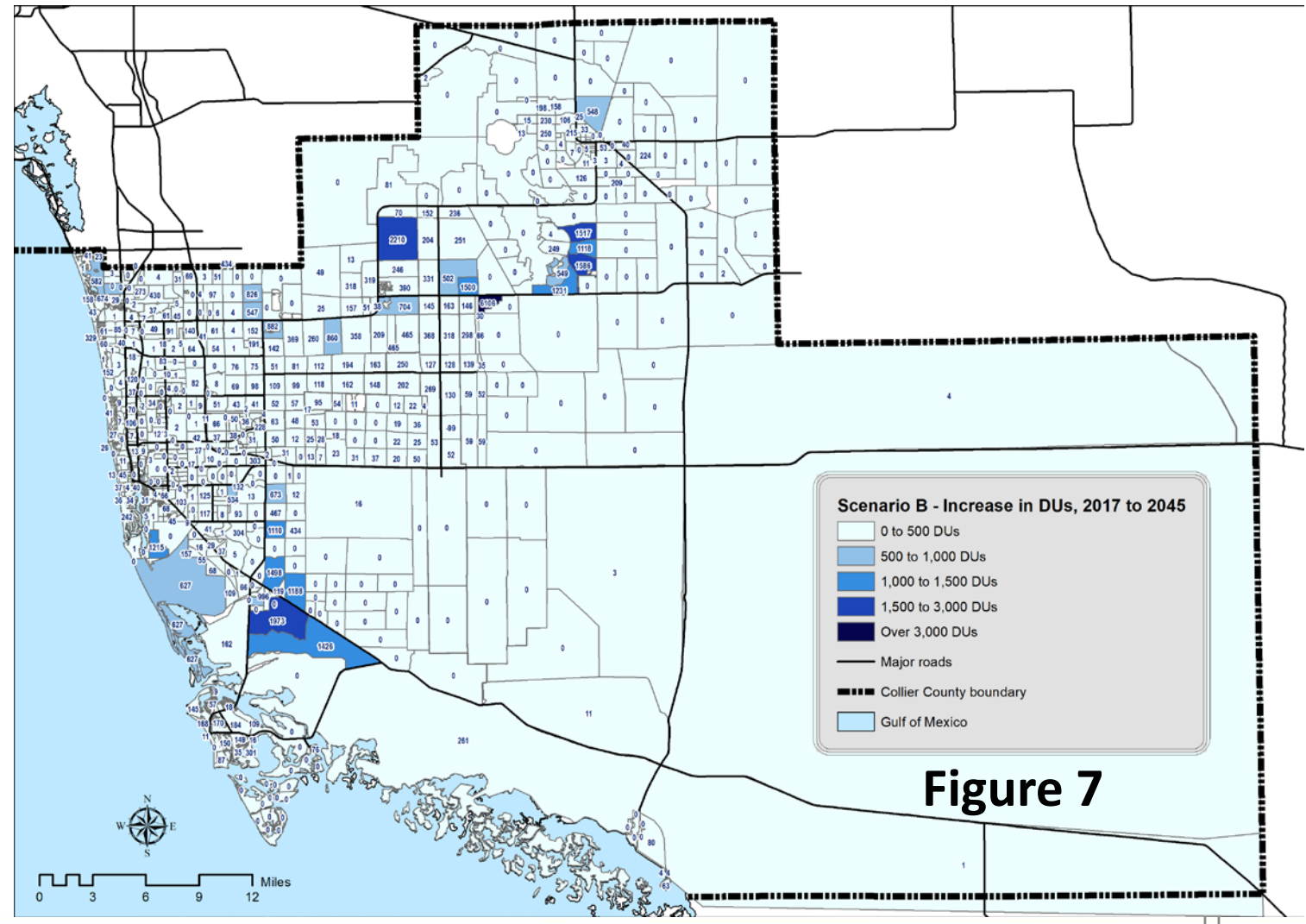
Scenario B will be submitted by the Collier MPO to FDOT for use in the District One regional planning model for the 2045 LRTP.

2045 (forecast year) socio-economic data



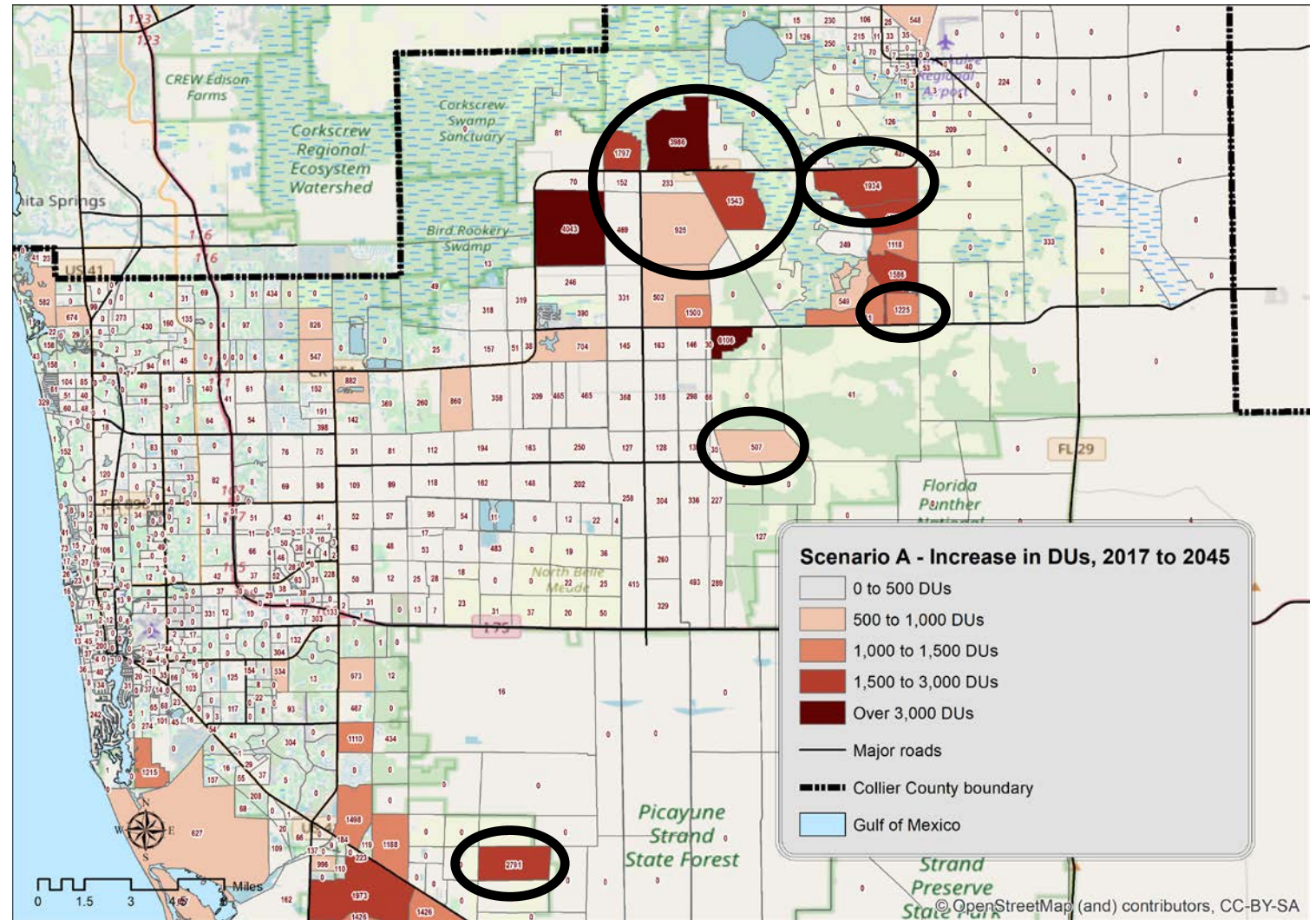
**Scenario A (CIGM):
Increase in Dwelling Units**

2045 (forecast year) socio-economic data



**Scenario B (BEBR medium)
Increase in Dwelling Units**

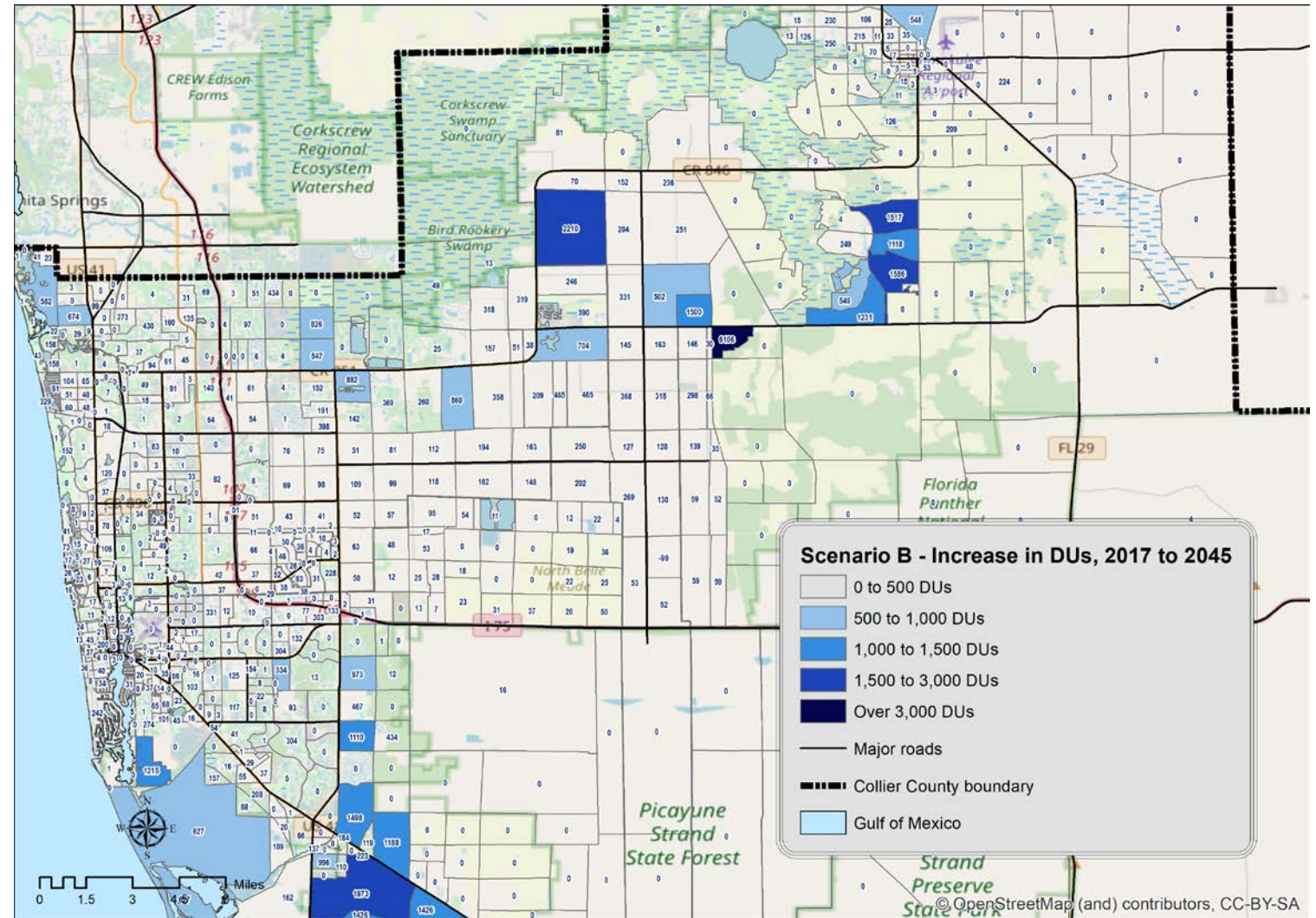
2045 (forecast year) socio-economic data



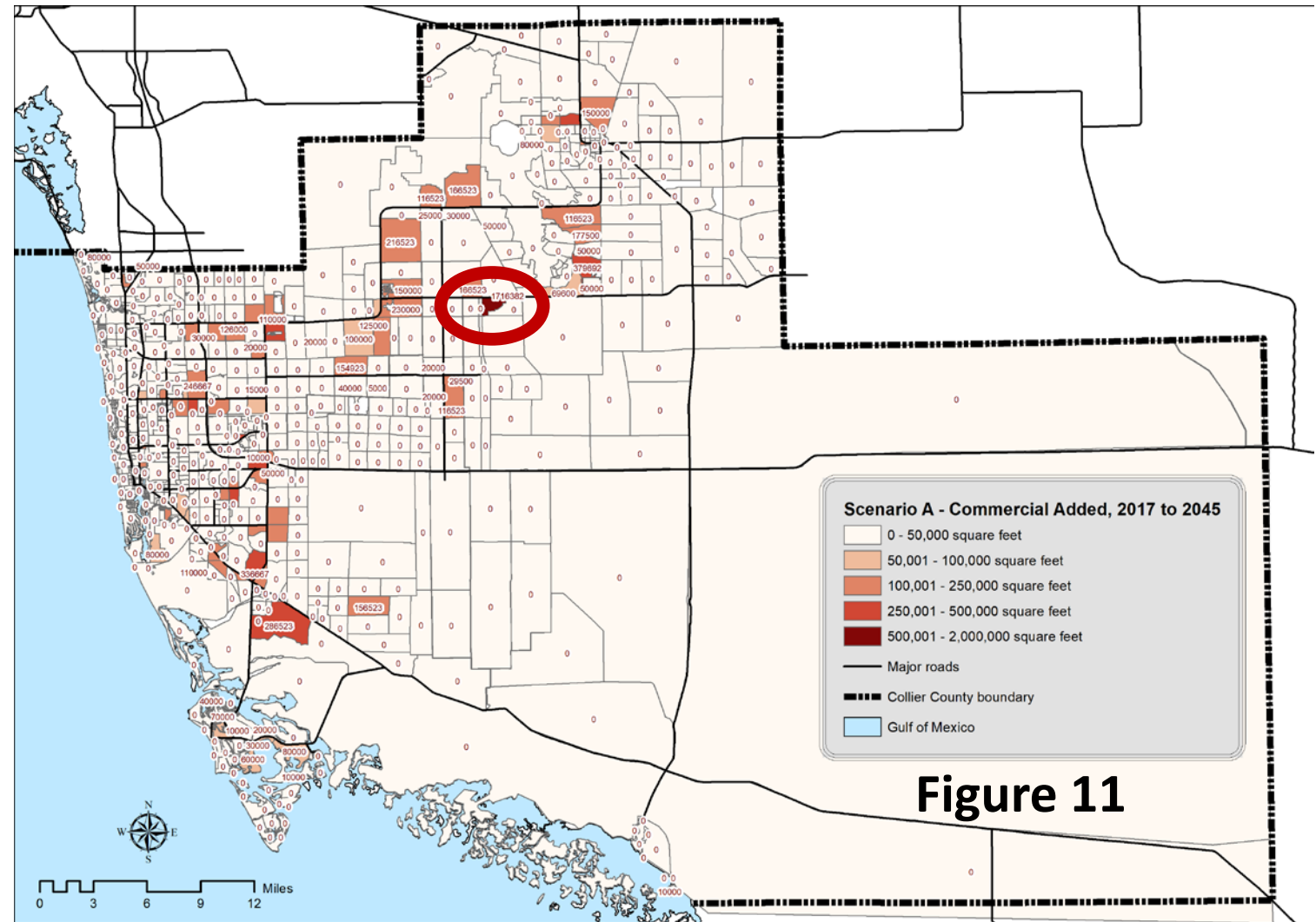
**Scenario A (CIGM):
Increase in Dwelling Units**

2045 (forecast year) socio-economic data

Scenario B (BEBR medium) Increase in Dwelling Units

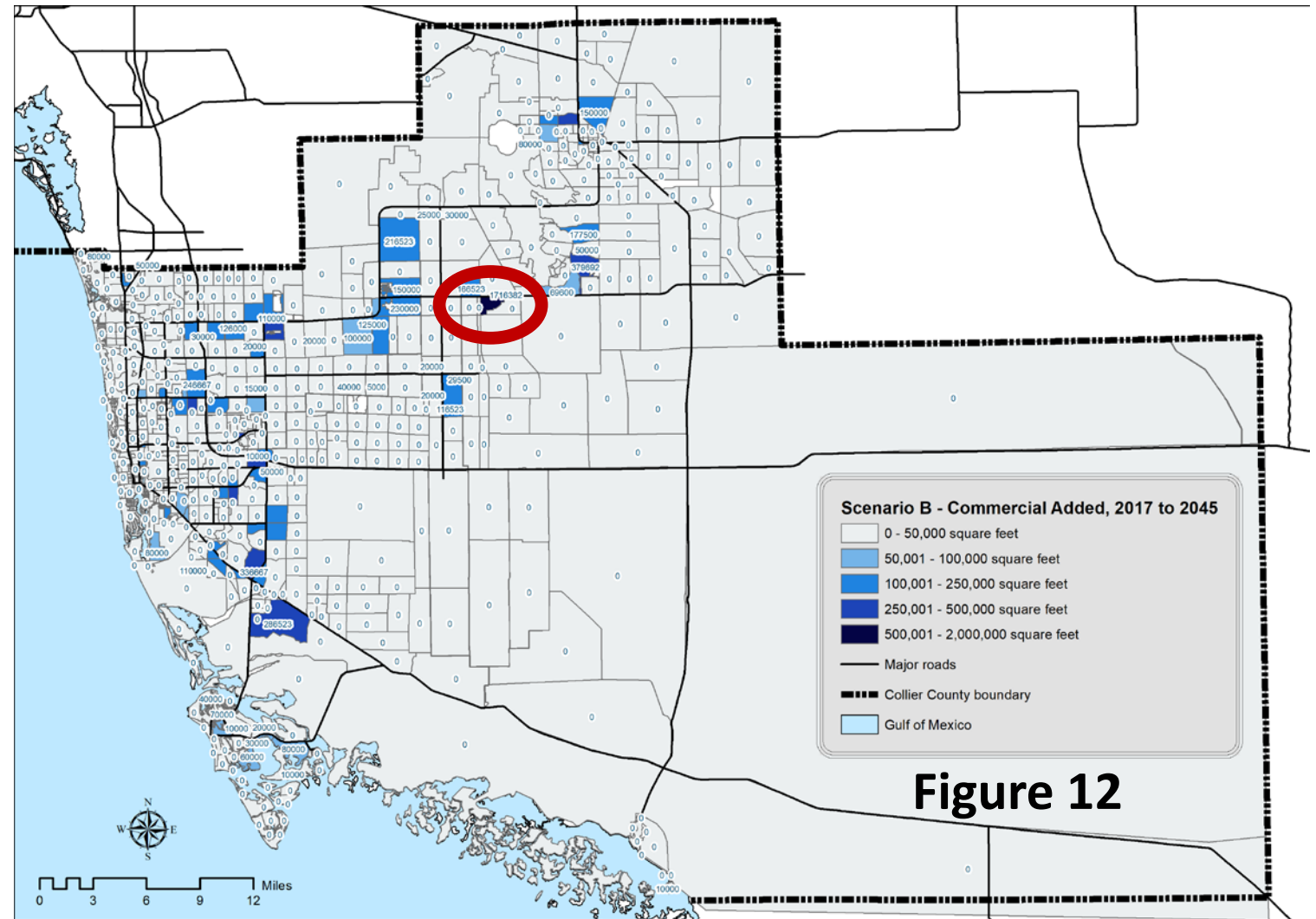


2045 (forecast year) socio-economic data



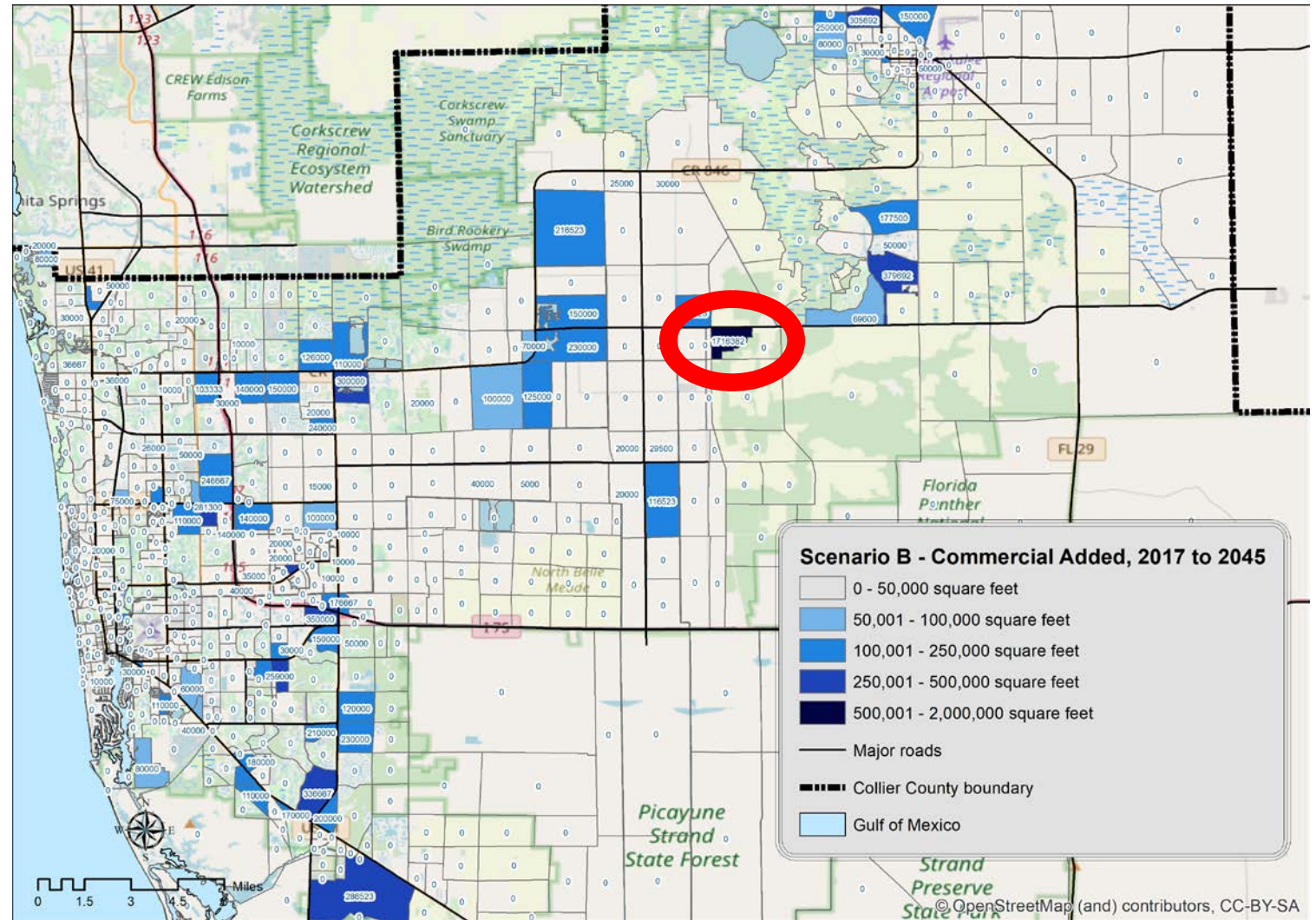
**Scenario A (CIGM):
Increase in Commercial SF**

2045 (forecast year) socio-economic data



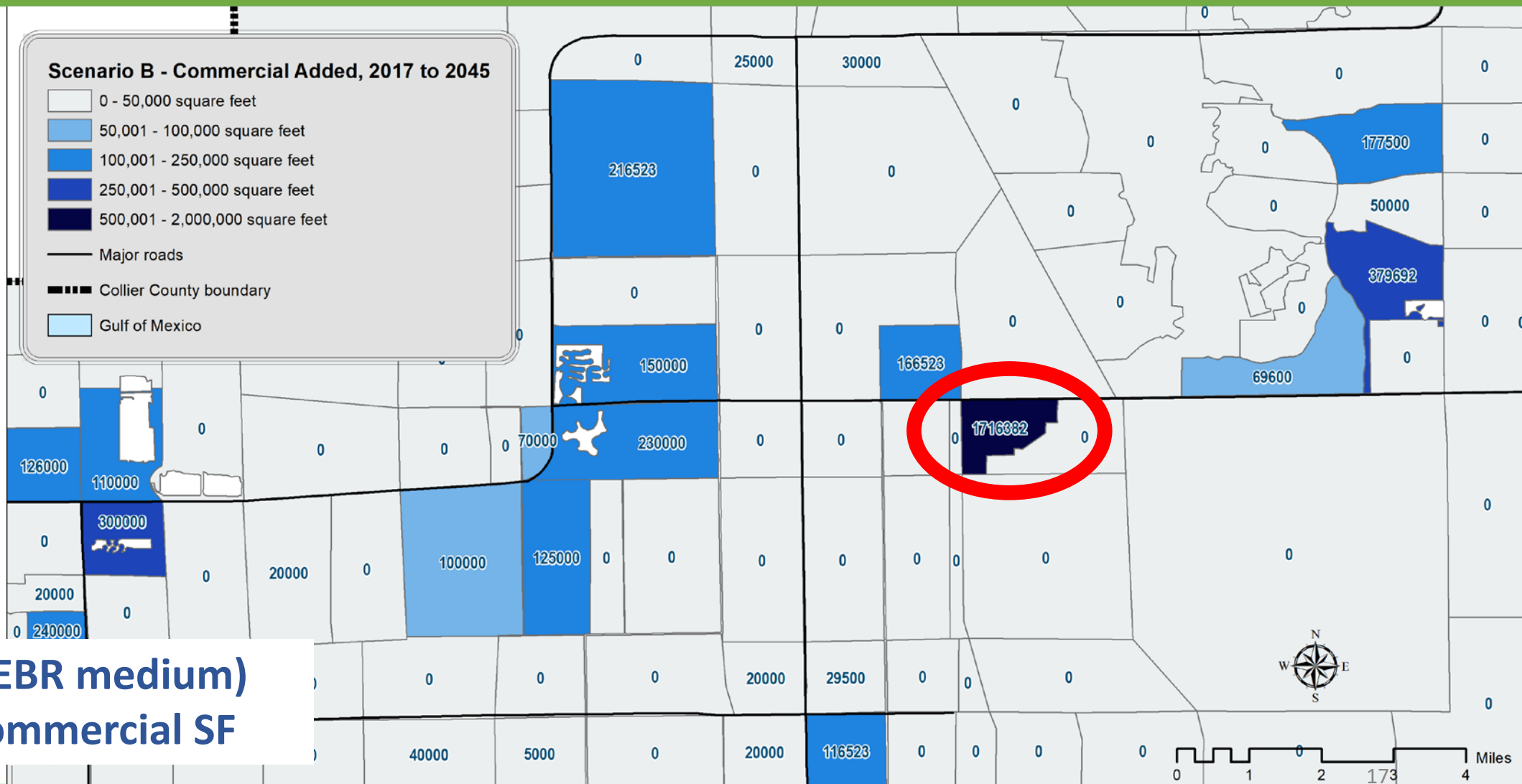
**Scenario B (BEBR medium)
Increase in Commercial SF**

2045 (forecast year) socio-economic data

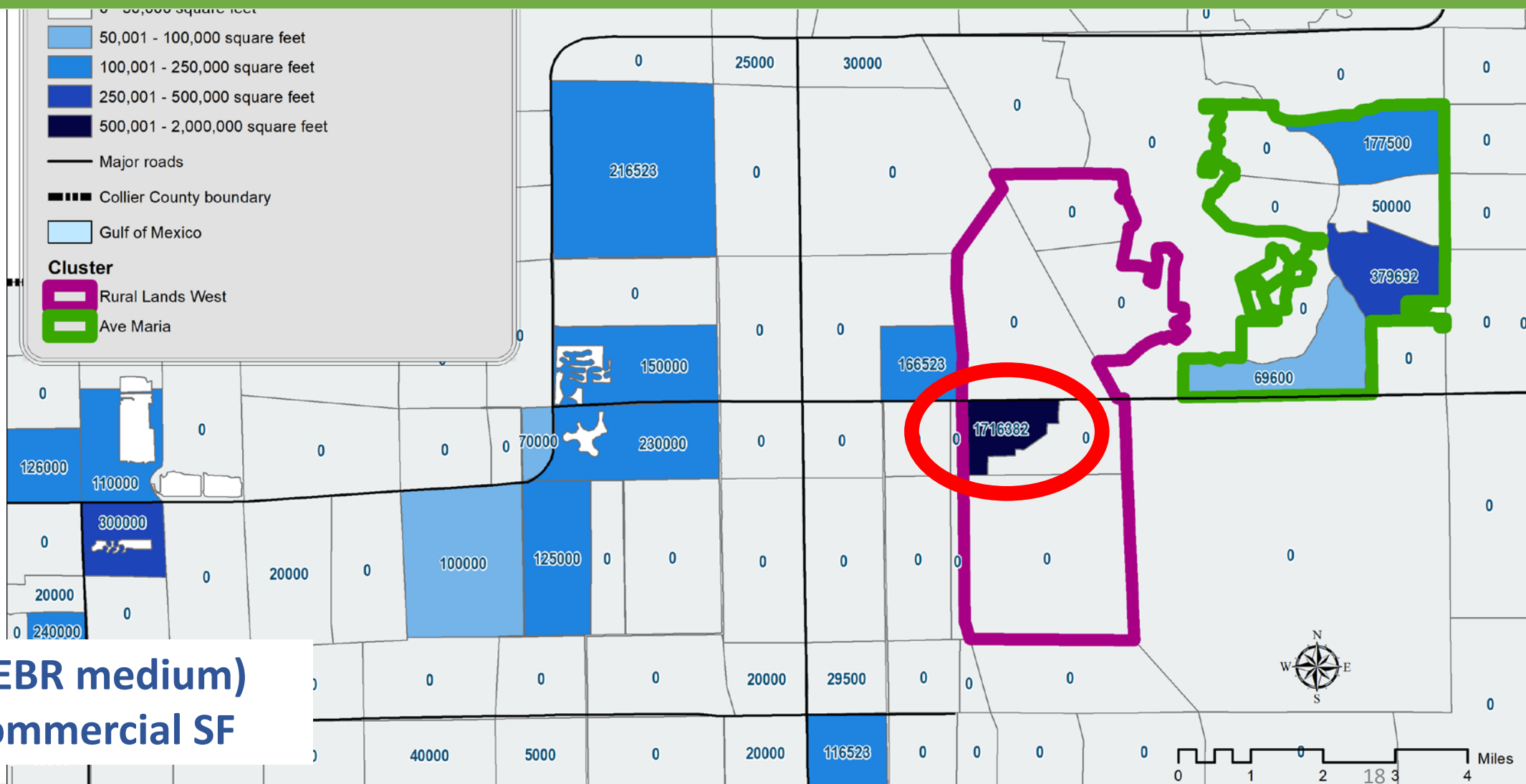


**Scenario B (BEBR medium)
Increase in Commercial SF**

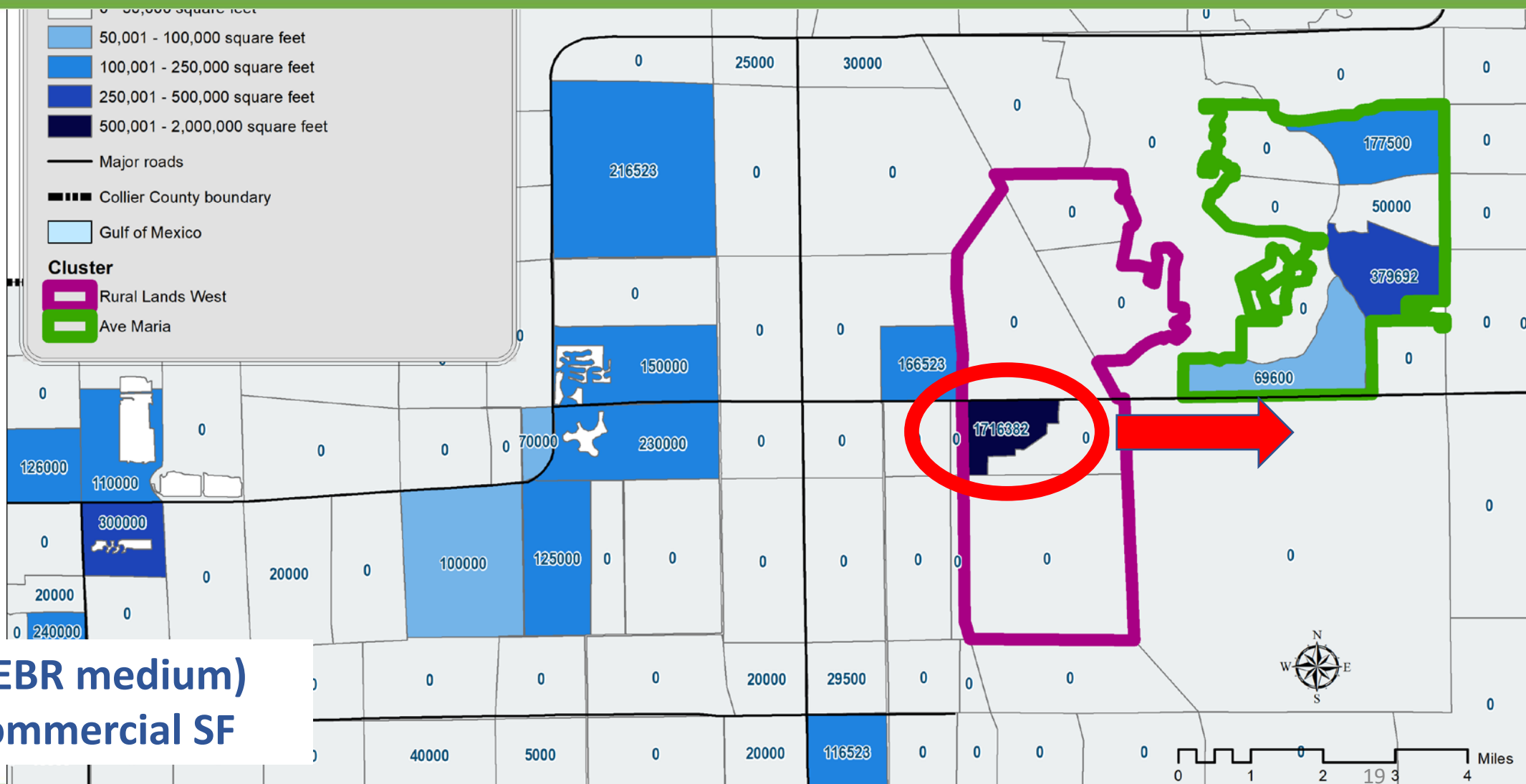
2045 (forecast year) socio-economic data



2045 (forecast year) socio-economic data

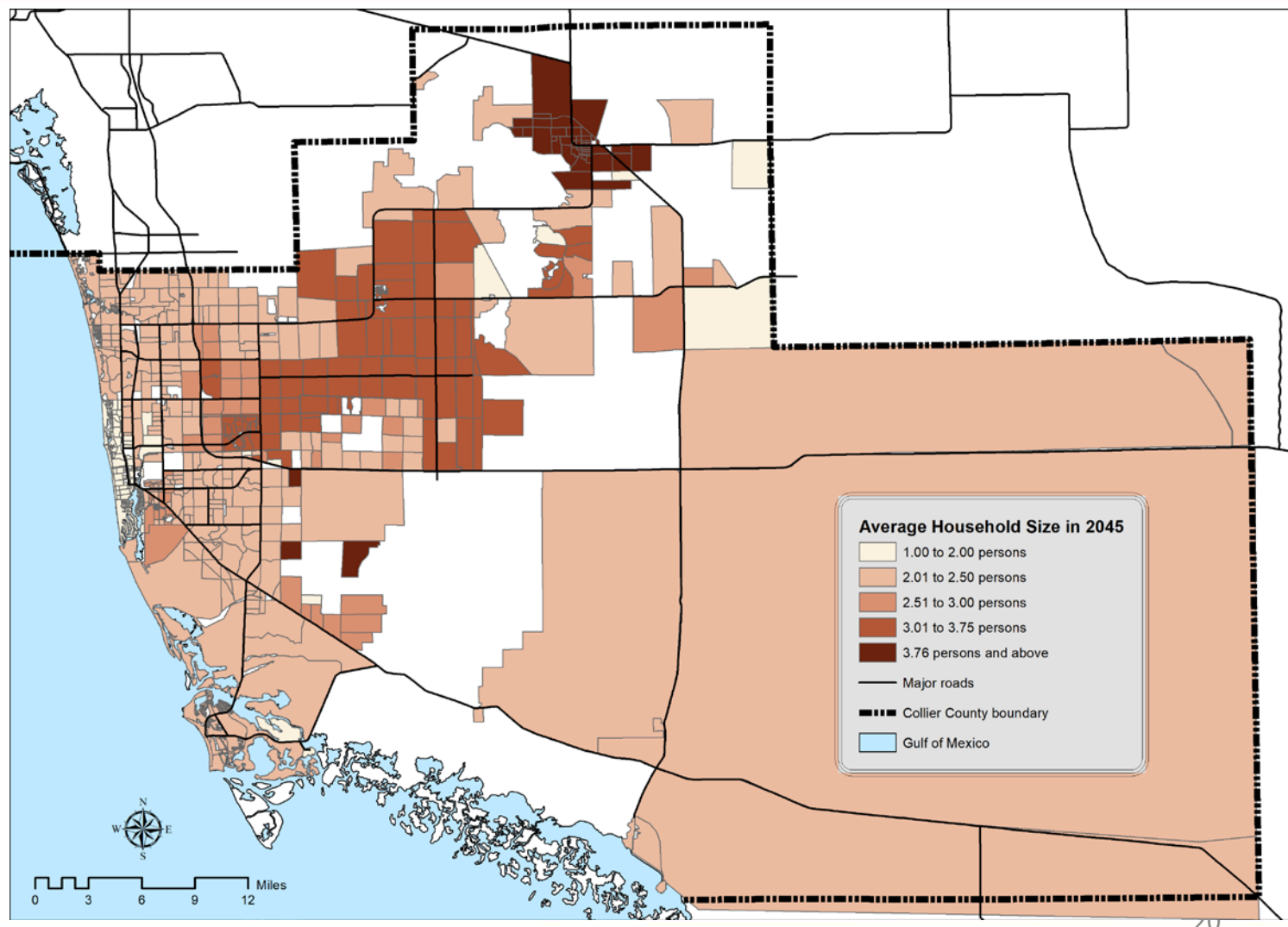


2045 (forecast year) socio-economic data



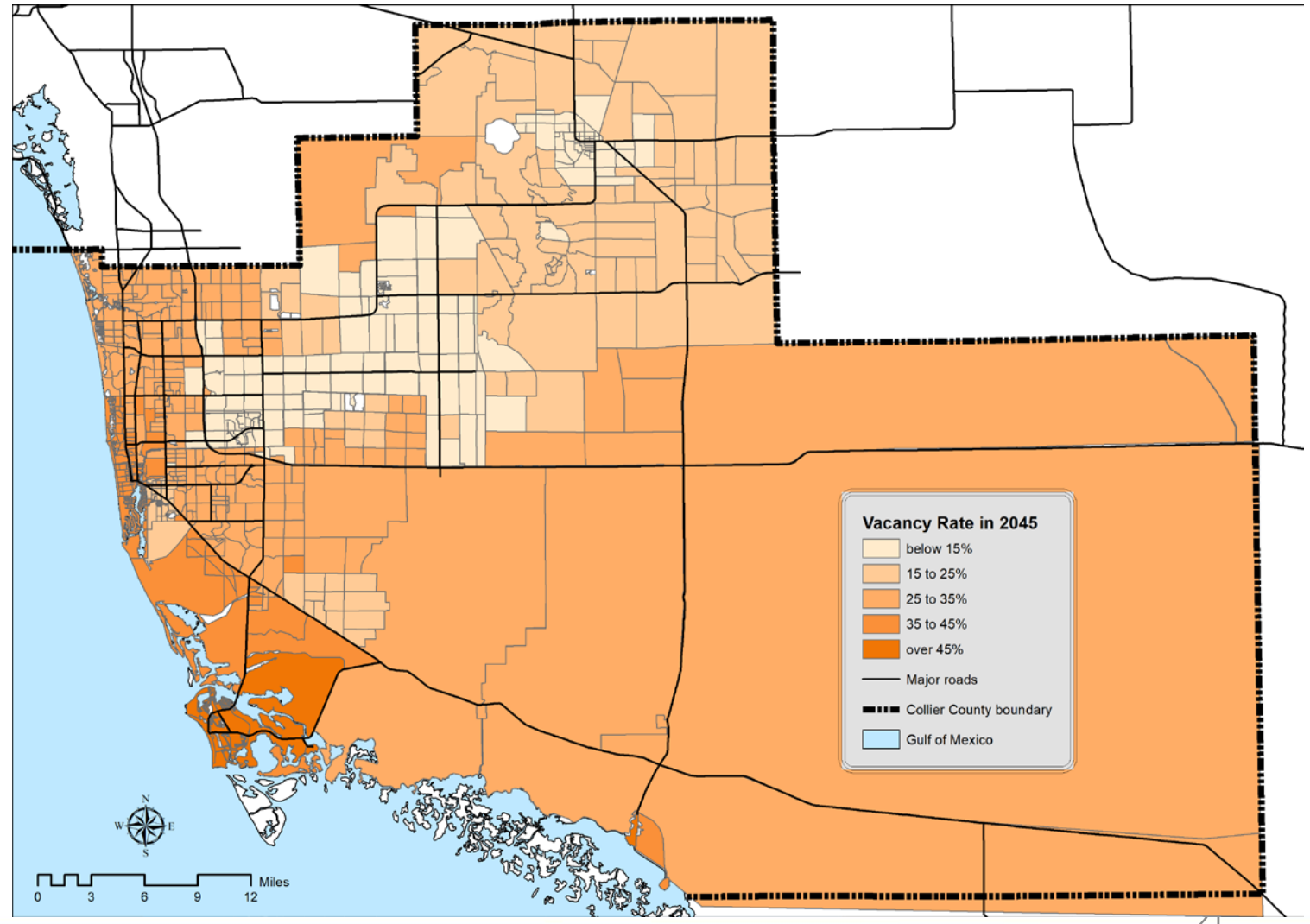
2045 (forecast year) socio-economic data

**Average household size
(both scenarios)**



2045 (forecast year) socio-economic data

**Vacancy rate
(both scenarios)**





Next Steps

- MPO Board – December 13, 2019
- Submit 2015 data to Florida DOT – January 15, 2020



ENVISION 2045

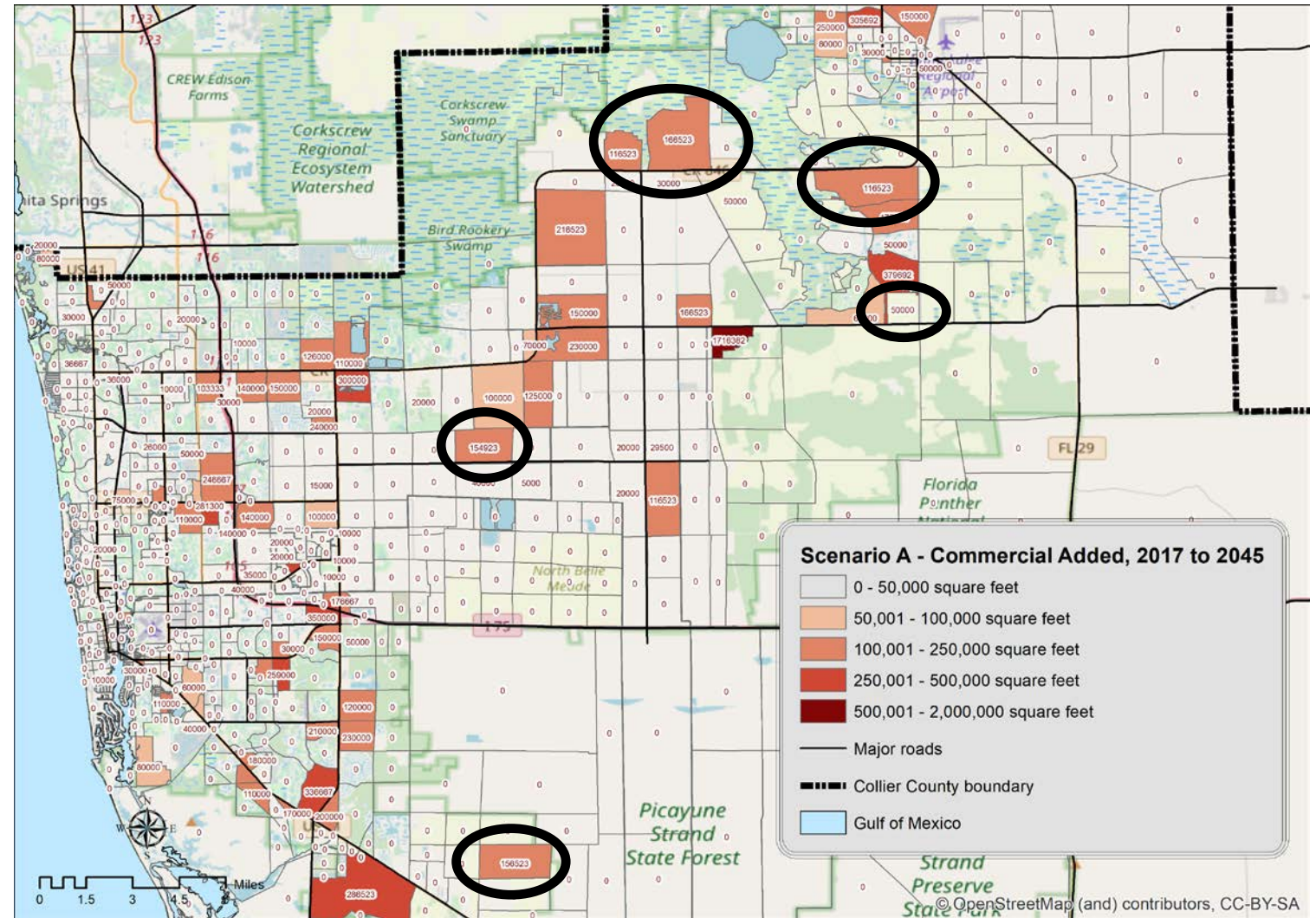
Collier MPO

THANK YOU



2045 (forecast year) socio-economic data

Scenario A (CIGM): Increase in Commercial SF



2045 (forecast year) socio-economic data

Scenario B (BEBR medium) Increase in Commercial SF

