



## **COLLIER MPO 2021 CALL FOR BIKE-PED PROJECTS**

Collier MPO follows the process outlined in the Bicycle and Pedestrian Master Plan (BPMP) Chapter 7 – Policies and Implementation when issuing a Call for Project. The BPMP identifies Funding Priorities and Evaluation Criteria (**Exhibit A, Attachment 1**). The 2045 Long Range Transportation Plan – Cost Feasible Plan establishes a programming budget of approximately \$5 million for bike/ped projects in Fiscal Year 2028. See Bicycle Pedestrian Box Funds on Table 6-7 p 6-15 in the 2045 LRTP, **Exhibit A, Attachment 2**.

### **SUBMITTAL PROCESS AND TIMELINE**

- **February 16, 2021** MPO distributes Call for Projects & application materials
- **July 20, 2021** Agencies submit Project Concept Sheets (**Exhibit A, Attachment 3**)
- **August 17, 2021 BPAC Meeting** Review Project Concept Sheets
- **October 30, 2021** Agencies submit FDOT District 1 Priority Project Information Packets and MPO Scoring Sheets (**Exhibit A, Attachments 4 & 5**)
- **November 16, 2021 BPAC Meeting** – preliminary review of FDOT Project Information Packets, project scoring and ranking
- **November 29, 2021 CAC/TAC Meeting** – preliminary review and comment on FDOT Project information Packets, BPAC scoring and ranking
- **December 30, 2021** – agencies submit revised and supplemental information in response to comments
- **January 2022 BPAC Meeting** – final review, scoring and ranking of project applications
- **January 2022 CAC/TAC Meeting** – review and endorse BPAC project priority listing
- **February 2022** - MPO staff transmits project application forms to FDOT to begin constructability reviews
- **February 2022 – April 2022** - FDOT conducts constructability reviews
- **May 2022 BPAC Meeting** – Update committee on constructability review; opportunity to reaffirm or adjust priorities based on new information
- **May 2022 Board Meeting** – Board previews draft project priority lists
- **June 2022 Board Meeting** – MPO Board approves project priorities

**SEE EXHIBIT A – Application Materials, Attachments 1-5  
FOR MORE INFORMATION CONTACT:**

Anne McLaughlin, MPO Director, [anne.mclaughlin@colliercountyfl.gov](mailto:anne.mclaughlin@colliercountyfl.gov)  
239-252-5884

## **EXHIBIT A – APPLICATION MATERIALS**



### **2021-22 CALL FOR BIKE/PED PROJECTS**

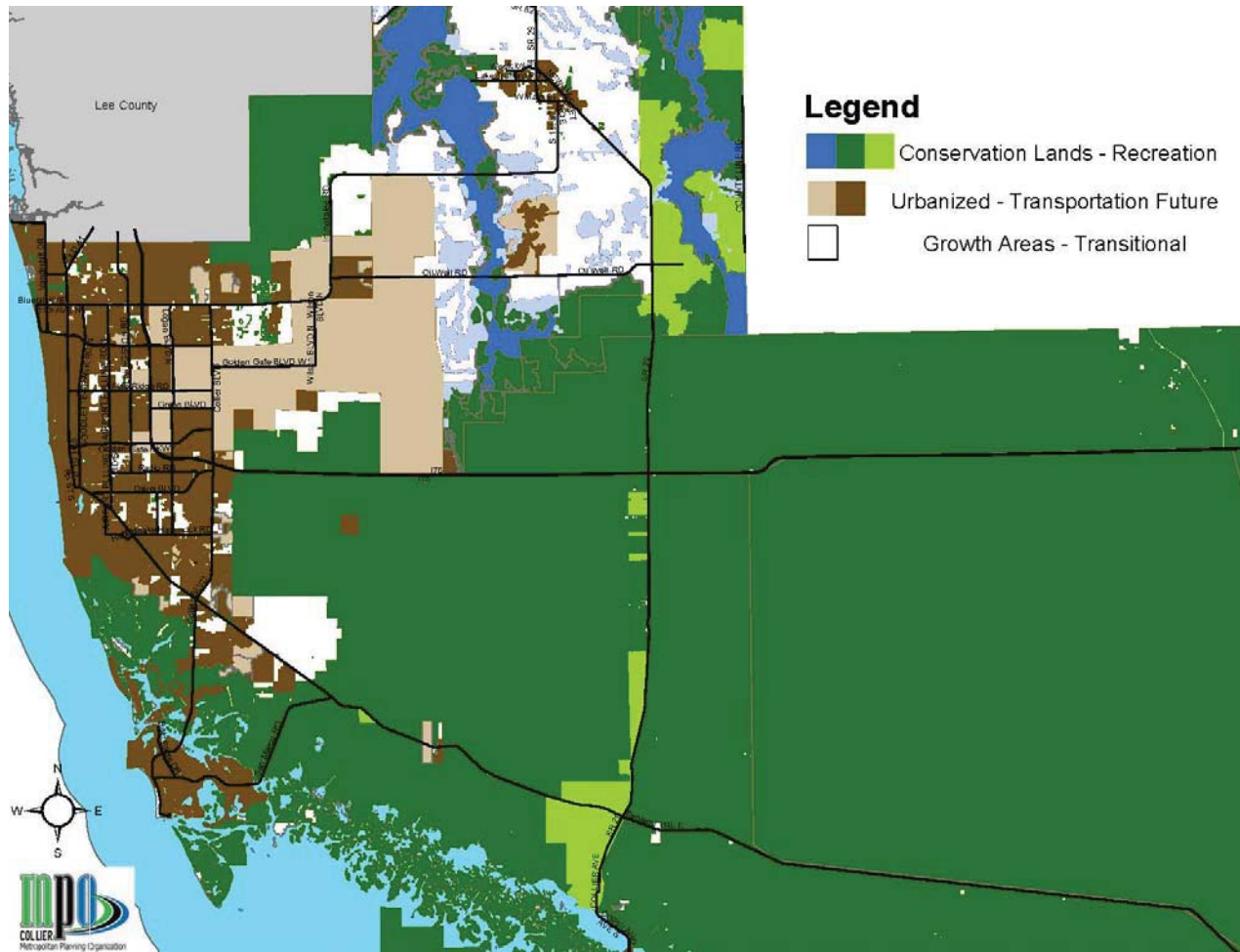


Figure 48. Collier MPO Bicycle and Pedestrian Policy Zones

**Funding Priorities**

The MPO Board establishes policy by which it allocates Surface Transportation-Urban (SU) funds for 1) congestion management, 2) new bridge construction, and 3) bicycle and pedestrian projects. MPO staff issues a Call for Projects based on the Board’s established allocation policy and schedule, which is currently on a five-year rotation among the three categories. MPO member entities submit bicycle and pedestrian infrastructure projects that implement the current, adopted Bicycle and Pedestrian Master Plan, which is, or will be, incorporated by reference into the current, adopted LRTP. Bicycle and pedestrian projects range from locations on local, collector, and arterial roads to greenway connections, RSAs, and special studies.

- 1) The Network Needs analysis (Chapter 5) identifies the MPO’s priorities for funding projects based on safety, equity, and connectivity. In addition, the MPO’s priorities include the projects recommended in adopted Community Walkability studies and the current adopted bicycle and/or pedestrian master plans of the cities of Marco Island, Naples, and Everglades City and CRAs in Collier County, all of which are incorporated by reference.



- 2) MPO staff will coordinate with FDOT and local entities to implementing RSA recommendations that the MPO Board has specifically endorsed.
- 3) The MPO’s priority projects include planning, designing, and constructing Complete Streets retrofits to coincide with a) the FDOT top five high-crash corridors, b) high-use CAT routes, and c) equity. The two highest priority Complete Streets retrofit projects are:
  - a) US-41 between 5<sup>th</sup> Avenue/9<sup>th</sup> Street intersection and Airport Road
  - b) Airport Road from US-41 north to Radio Road

### Evaluation Criteria

- 1) MPO staff will issue a Call for Projects on an as-needed basis, based on the MPO’s current adopted TMA SU “Box” allocation/programming policy. The Board has sole discretion to set this policy and may change it at any time pursuant to the MPO Bylaws and Public Participation Plan.
- 2) Member entities are free to choose which projects to submit as long as they are identified in the Network Needs analysis (Chapter 5) and/or other local plans incorporated by reference in this Plan. Member entities may submit up to one project for each jurisdictional area represented by voting membership on the Board, and MPO staff may submit one project of regional significance, for a total of 10 projects in response to any Call for Projects:
  - 1 project located in each County Commissioner District (total 5)
  - 2 projects located within the City of Naples
  - 1 project located within City of Marco Island
  - 1 project located within City of Everglades City (inclusive of Chokoloskee and Plantation Island)
  - 1 project submitted by MPO staff
- 3) MPO staff will conduct a preliminary assessment of submitted projects for eligibility according to the following criteria; incomplete project submittals will not be considered for funding:
  - Timeliness – the submitting agency verifies that the project can and should be designed and constructed within the time-period selected for funding.
  - Constructability – the submitting agency verifies that the project is fully scoped, the right-of-way is available, and cost estimates are complete and accurate.
  - Funding Availability – the submitting agency has identified funding that is currently available for programming by the MPO and funding available for programming by the local entity. Funding availability must be sufficient to meet project costs.
- 4) MPO staff will conduct a preliminary prioritized ranking of eligible projects based on the following scoring criteria. The BPAC, CAC, and TAC will review and comment on the ranking and endorse with adjustments as deemed warranted. Projects will be scored and ranked according to the method listed below. The score is cumulative depending on the number of factors addressed:
  - Safety
    - Implements a recommended action in a Bicycle/Pedestrian Road Safety Audit – 5 points



- Addresses a safety concern involving serious injuries and fatalities as identified in this Plan, absent a Safety Audit to verify the proposed mitigation measure – 3 points
  - Addresses a safety concern involving crashes of less severity, absent a Safety Audit to verify the proposed mitigation measure – 2 points
  - Addresses a safety concern expressed by members of the public in the absence of crash records – 1 point
  - Equity
    - Fills a need associated with an Environmental Justice community or use identified in this Plan – 5 points
    - Fills a need associated with an area that meets some, but not all EJ criteria used in identifying EJ communities for this Plan – 3 points
    - Fills a need associated with an area that does not have adequate access to nonmotorized transportation facilities based upon public input received in the development of this Plan – 1 point
  - Connectivity
    - Fills a prioritized infrastructure gap identified in this Plan – 5 points
    - Fills a need for improved connectivity based upon public input received in the development of this Plan – 2 points
- 5) MPO staff will present the complete record of staff and advisory committee rankings to the MPO Board. The Board has sole and final decision-making authority in determining the final list of priorities in ranked order. MPO staff will submit the Board's adopted project priorities to FDOT on or before June 30th.

## MPO Programs and Special Events

MPO staff will incorporate bi-lingual educational material from NHTSA, such as flyers, brochures, posters, and Public Service Announcements (PSAs), and will work with the Community Traffic Safety Team to augment distribution of the materials.

Staff will work with the CTST and FDOT to use changeable message signs on both Airport Road and US-41 to display to motorists the need to follow the three-foot rule and to watch for cyclists at driveway crossings.

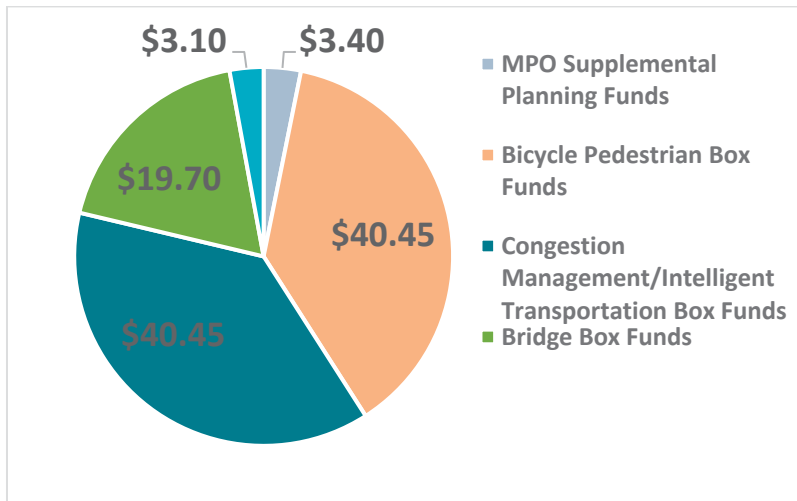
MPO staff will help promote outreach and education opportunities offered throughout Collier County on the MPO website and through social media. Example programs include Walk/Bike to School Day, Bike to Work Day/Week, Safe Kids SWFL, bike helmet fittings and giveaways, carseat fittings and giveaways, bike rodeos, programs such as Summer Nights, Winter Nights, and Fridays Nights (safety programs targeting school-age kids and their parents), and Ciclovía (Spanish term that means “cycleway),” an event in which a permanent bike path or certain streets are closed to automobiles for cyclists and pedestrians. Ciclovía Immokalee! has hosted events in May and August 2017 and 2018 in a parking lot (see <http://www.ciclovaiammokalee.org/august-4-2018-ciclovía-immokalee-joins-lipman-family-farms-at-their-backpack-giveaway/>).

## Attachment 2

**Table 6-7. SU Box Funds by Planning Year and Project Phase**

Allocation Type	Plan Period 2: 2026-2030			Plan Period 3: 2031-2035			Plan Period 4: 2036-2045			Total Cost 2026- 2045
	PRE-ENG	ROW	CST	PRE-ENG	ROW	CST	PRE-ENG	ROW	CST	
MPO Supplemental Planning Funds	\$0.70			\$0.80			\$1.90			\$3.40
<b>Bicycle Pedestrian Box Funds</b>			\$10.17			\$10.13			\$20.15	\$40.45
Congestion Management/Intelligent Transportation Box Funds			\$10.17			\$10.13			\$20.15	\$40.45
Bridge Box Funds			\$4.96			\$4.94			\$9.80	\$19.70
Safety			\$0.80			\$0.80			\$1.50	\$3.10

**Figure 6-9. SU Fund Allocation Through 2045**



# Attachment 3

## MPO PROJECT CONCEPT SHEET – NON-MOTORIZED

### Part 1 – Determination of Eligibility –

Applications must sufficiently respond to the timeliness, constructability and funding availability questions below. MPO staff will review the applications. Applications that do not sufficiently address these questions will not be considered for further evaluation.

1. Name of Submitting Jurisdiction \_\_\_\_\_
2. Name of Applicant \_\_\_\_\_
3. Signature of Applicant \_\_\_\_\_
4. Date of Application \_\_\_\_\_
5. Project Title \_\_\_\_\_
6. Project Category  
    \_\_\_\_\_ Arterial / Collector                      \_\_\_\_\_ Local / Residential  
    \_\_\_\_\_ Spine / Pathway                              \_\_\_\_\_ Complete Streets / Safety Corridor Study

7. Project Location, Termini and Length (*Attach Location Map*)  
\_\_\_\_\_  
\_\_\_\_\_  
\_\_\_\_\_  
\_\_\_\_\_

8. Project Description (*Include information pertaining to programming in the MPO TIP, such as project type, phasing amount of state/local funding requested, local match if any*)  
\_\_\_\_\_  
\_\_\_\_\_  
\_\_\_\_\_  
\_\_\_\_\_  
\_\_\_\_\_  
\_\_\_\_\_  
\_\_\_\_\_

9. Timeliness – Verify that the project can and should be designed and constructed within the time-period selected for funding. (*Opportunity to describe any special circumstance involving timing and phasing of project – to piggy-back on another project, or connect to adjoining project and how schedules relate, for example. Attach additional pages, documentation if needed.*)  
\_\_\_\_\_  
\_\_\_\_\_  
\_\_\_\_\_

---

---

---

---

10. Constructability – Verify that the project is fully scoped, the right-of-way is available, and cost estimates are complete and accurate (*Attach available documentation, such as construction or planning project cost estimates, extent to which ROW availability is confirmed at this stage, photos, etc.*).

---

---

---

---

---

---

---

---

---

---

---

---

11. Funding Availability – Identify funding (source and amount) that is currently available for programming by the MPO **and** by the local entity. Funding availability must be sufficient to meet project costs. (*Attach Documentation such as CIP page, AUIR page*)

---

---

---

---

---

---

---

---

---

---

12. Project Relationship to Bicycle and Pedestrian Master Plan (BPMP) (*Demonstrate where/how project is Identified in the Network Needs analysis (Chapter 5) – provide page number, table, map, appendices if relevant, and/or identified in local plan adopted by reference, specify which Plan*)

---

---



---

---

---

---

---

---

---

13. If this is a design and/or construction project, describe how it addresses the Design Guidelines in Chapter 6 of the BPMP. *(attach pages or documentation if needed.)*

---

---

---

---

---

---

---

---

14. Describe how this project is consistent with the policies contained in Chapter 7 of the BPMP. *(Attach additional pages or documentation if needed.)*

---

---

---

---

---

---

---

---

15. Optional - attach additional information that will aid in understanding the project.

## Attachment 4



### District One Priority Project Information Packet

***Please fill out this application completely. Please ensure all attachments are LEGIBLE Applications containing insufficient information will not be reviewed by the FDOT.***

**Name of Applying Agency:** [Click here to enter text.](#)

**Project Name:** [Click here to enter text.](#)

**Project Category:**

Congestion Management  TRIP  CIGP  SU, TALU Bike/Ped \_\_\_\_  
Transportation Alternative  Transit/Modal  SCOP  SCRAP

For more information on State Grant Programs (CIGP, SCOP, SCRAP, TRIP) [please click here.](#)

**Is applicant LAP certified?** Yes  No

**Is project on State Highway System?** Yes  No

*If the project is off the state system and the applicant is LAP certified the project will be programmed as a LAP project.*

**Is the roadway on the Federal Aid Eligible System?** Yes  No

If yes, provide Federal Aid roadway number: [Click here to enter text.](#)

If no, give local jurisdiction: [Click here to enter text.](#)

<http://www.fdot.gov/statistics/fedaids/>

**Detailed Project Limits/Location:**

Describe begin and end points of project, EX., from ABC Rd. to XYZ Ave. Limits **run south to north or west to east.** Include jurisdiction (city/county), project length, attach a labeled project, map.

[Click here to enter text.](#)

**Discuss how this project is consistent with the MPO/TPO Long Range Transportation Plan?**

Page Number (attach page from LRTP): [Click here to enter text.](#)

**Discuss the project in the local jurisdiction's Capital Improvement Plan?**

(Attach page from CIP): [Click here to enter text.](#)

**Project Description**

**Phase(s) requested:**

Planning Study  PD&E  PE  ROW  CST  CEI

**Project cost estimates by phase (Please include detailed cost estimate and documentation in back-up information):**

Phase (PD&E, ROW, PE, CST)	Estimated Total Cost	Funds Requested	Matching Local Funds	Local Fund Source	Type of Match (Cash, in-kind)
[Phase]	[Number]	[Number]	[Number]	[Fund Source]	[Match Type]
[Phase]	[Number]	[Number]	[Number]	[Fund Source]	[Match Type]
[Phase]	[Number]	[Number]	[Number]	[Fund Source]	[Match Type]
[Phase]	[Number]	[Number]	[Number]	[Fund Source]	[Match Type]

**Total Project Cost: \$ [Number]**

**Project Details:** Clearly describe the existing conditions and the proposed project and desired improvements in detail. Please provide studies, documentation, etc., completed to-date to support or justify the proposed improvements. Include labeled photos and maps. (Add additional pages if needed):

[Click here to enter text.](#)

**Constructability Review**

For items 2-9 provide labeled and dated photos (add additional pages if needed)

1. Discuss other projects (ex. drainage, utility, etc.) programmed (local, state or federal) within the limits of this project? [Click here to enter text.](#)

2. Does the applicant have an adopted ADA transition plan? Yes  No

Identify areas within the project limits that will require ADA retrofit. (Include GIS coordinates for stops and labeled photos and/or map.)

[Click here to enter text.](#)

3. Is there a rail crossing along the project?

Yes  No

What is the Rail MP?

[Enter MP](#)

4. Are there any transit stops/shelters/amenities within the project limits?

Yes  No

How many? [Click here to enter text.](#)

Stop ID number: [Click here to enter text.](#)

5. Is the project within 10-miles of an airport?                      Yes                       No
6. Coordinate with local transit and discuss improvements needed or requested for bus stops?  
(add additional pages if needed):  
[Click here to enter text.](#)
7. Are turn lanes being added?                      Yes                       No   
If yes, provide traffic counts, length, and location of involved turn lanes.  
[Click here to enter text.](#)
8. Drainage structures:
- Number of culverts or pipes currently in place: [Click here to enter text.](#)
  - Discuss lengths and locations of each culvert along the roadway: [Click here to enter text.](#)
  - Discuss the disposition of each culvert and inlet. Which culverts are “to remain” and which are to be replaced, upgraded, or extended? [Click here to enter text.](#)
  - Discuss drainage ditches to be filled in?  
(Discuss limits and quantify fill in cubic yards) [Click here to enter text.](#)
  - Describe the proposed conveyances system (add additional pages if needed.)  
[Click here to enter text.](#)
  - Are there any existing permitted stormwater management facilities/ponds within the project limits?                      Yes                       No
  - If yes, provide the location and permit number (add additional pages if needed)  
[Click here to enter text.](#)
  - Discuss proposed stormwater management permits needed for the improvements. [Click here to enter text.](#)
  - List specific utilities within project limits and describe any potential conflicts (add additional pages if needed): [Click here to enter text.](#)
  - Discuss Bridges within project limits? [Click here to enter text.](#)
  - Can bridges accommodate proposed improvements?                      Yes                       No   
If no, what bridge improvements are proposed? (Offset and dimensions of the improvements, add additional pages if needed):  
[Click here to enter text.](#)

9. Has Right-of-way (ROW), easements, or ROW activity already been performed/acquired for the proposed improvements? If yes, please provide documentation

Yes  No

If ROW or Easements are needed detail expected area of need (acreage needed, ownership status):

[Click here to enter text.](#)

10. Discuss required permits (ERP, Drainage, Driveway, Right of Way, etc.): [Click here to enter text.](#)

If none are needed, state the qualified exemption:

[Click here to enter text.](#)

11. Are there any wetlands within the project limits? Yes  No

If yes, list the type of wetlands, estimated acreage and if mitigation will be required. Please note whether the project is within the geographic service area of any approved mitigation banks. Provide any additional information:

[Click here to enter text.](#)

12. Are there any federal or state listed/protected species within the project limits?

Yes  No

If yes, list the species and what, if any mitigation or coordination will be necessary: [Click here to enter text.](#)

If yes, discuss critical habitat within the project limits: [Click here to enter text.](#)

13. Discuss whether any prior reviews or surveys have been completed for historical and archaeological resources (include year, project, results)

[Click here to enter text.](#)

14. Are any Recreational, historical properties or resources covered under section 4(f) property within the project limits? Yes  No

(Provide details) [Click here to enter text.](#)

15. Discuss whether any prior reviews or surveys have been completed for sites/facilities which may have potential contamination involvement with the proposed improvements. This should include a discussion of locations which may directly impact the project location, or be which may be exacerbated by the construction of the proposed improvements. [Click here to enter text.](#)

16. Are lighting improvements requested as part of this project? Yes  No   
Please provide a lighting justification report for the proposed lighting.  
[Click here to enter text.](#)

17. Is a mid-block crossing proposed as part of the project? Yes  No   
If yes, please provide the justification for mid-block crossing.  
[Click here to enter text.](#)

### **Required Attachments**

- A. Detailed Project Scope with Project Location Map with sufficient level of detail (Please include typical section of proposed improvements)
- B. Project Photos – dated and labeled (this is important!)
- C. Detailed Cost Estimates including Pay Items
- D. LRTP and Local CIP page
- E. Survey/As-builts/ROW documentation/Utility/Drainage information
- F. Detailed breakdown of ROW costs included in estimate (if ROW is needed/included in request or estimate)

## Applicant Contact Information

**Agency Name:**

**Mailing Address:** Click here to enter text.

**Contact Name and Title:** Click here to enter text.

**Email:** Click here to enter text.

**Phone:** Click here to enter text.

**Signature:** \_\_\_\_\_ **Date:** \_\_\_\_\_

*Your signature indicates that the information included with this application is accurate.*

**Maintaining Agency:**

**Contact Name and Title:** Click here to enter text.

**Email:** Click here to enter text.

**Phone:** Click here to enter text.

**Signature:** \_\_\_\_\_ **Date:** \_\_\_\_\_

*Your signature serves as a commitment from your agency to maintain the facility requested.*

**MPO/TPO:**

**Contact Name and Title:** Click here to enter text.

**Email:** Click here to enter text.

**Phone:** Click here to enter text.

**Signature:** \_\_\_\_\_ **Date:** \_\_\_\_\_

*Your signature confirms the request project is consistent with all MPO/TPO plans and documents, is eligible, and indicates MPO/TPO support for the project.*

## Attachment 5

### MPO PROJECT SCORING – NON-MOTORIZED

MPO staff will conduct a preliminary prioritized ranking of eligible projects based on the scoring criteria listed below. The BPAC, CAC, and TAC will review and comment on the ranking and endorse with adjustments as deemed warranted. The score is cumulative depending on the number of factors addressed:

MPO staff will present the complete record of staff and advisory committee rankings to the MPO Board. The Board has sole and final decision-making authority in determining the final list of priorities in ranked order. MPO staff will submit the Board's adopted project priorities to FDOT on or before June 30th.

#### ***CHECK APPLICABLE BOXES AND ATTACH DOCUMENTATION TO CONFIRM.***

##### 1. Safety

- a)  Implements a recommended action in a Bicycle/Pedestrian Road Safety Audit – 5 points
- b)  Addresses a safety concern involving serious injuries and fatalities as identified in this Plan, absent a Safety Audit to verify the proposed mitigation measure – 3 points
- c)  Addresses a safety concern involving crashes of less severity, absent a Safety Audit to verify the proposed mitigation measure – 2 points
- d)  Addresses a safety concern expressed by members of the public in the absence of crash records – 1 point

##### Equity

- a)  Fills a need associated with an Environmental Justice community or use identified in this Plan – 5 points
- b)  Fills a need associated with an area that meets some, but not all EJ criteria used in identifying EJ communities for this Plan – 3 points
- c)  Fills a need associated with an area that does not have adequate access to nonmotorized transportation facilities based upon public input received in the development of this Plan – 1 point



Connectivity

- a)  Fills a prioritized infrastructure gap identified in this Plan – 5 points
  
- b)  Fills a need for improved connectivity based upon public input received in the development of this Plan – 2 points