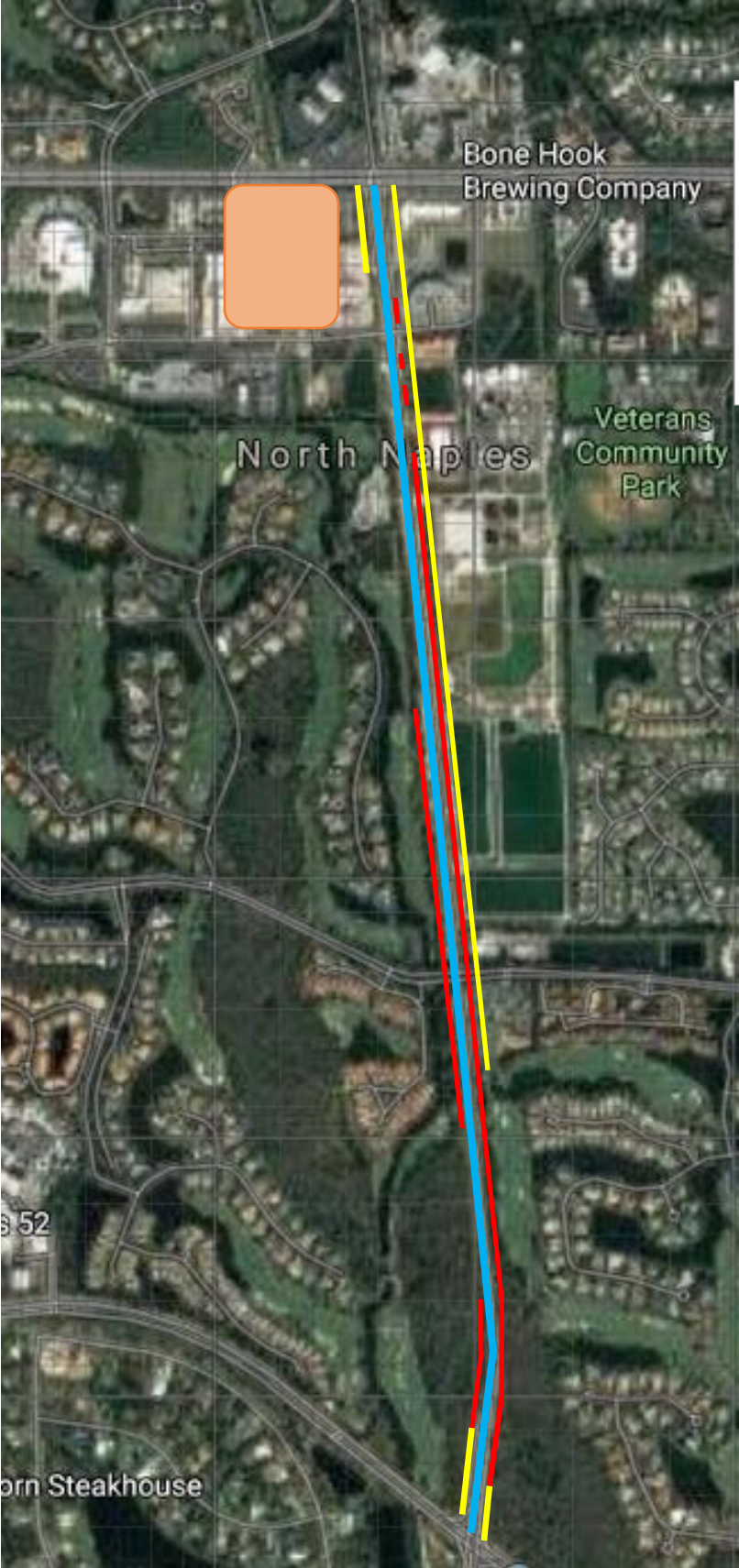


### ***Existing + Proposed Facilities***

The project team added a layer to the needs analysis described above—capacity enhancement roadway projects identified in the 2040 Long Range Transportation Plan (LRTP). Roadway enhancement projects provide an excellent opportunity to expand the bicycle and pedestrian network in a cost-effective manner.

The Existing + Proposed Facilities Map (Figure 17) is a visual summary of the project priorities for major roadways and the Spine Trail network based on the foregoing analysis. [Roadways identified for improvements in the County's Annual Update Inventory and Report \(AUIR\) and municipal Capital Improvement Programs \(CIPs\) are also considered priorities for potential expansion of the bicycle and pedestrian network.](#)

Facilities Gap Analysis



- Existing Sidewalk
- Existing Shoulder
- Goodlette Frank
- New Arthrex Facility