



# AGENDA CMC

Congestion Management Committee  
Collier County Growth Management Division  
Main Conference Room  
2885 South Horseshoe Drive  
Naples, Florida 34104

January 15, 2020  
2:00 p.m.

1. **Call to Order**
2. **Roll Call**
3. **Approval of Agenda**
4. **Approval of September 18, 2019 Meeting Minutes**
5. **Open to Public for Comment on Items Not on the Agenda**
6. **Agency Updates**
  - A. FDOT
  - B. MPO Director
  - C. Other
7. **Committee Action**
  - A. Election of Chair and Vice-Chair
  - B. Endorse TSP Report Objectives and CMP Network Methodology
8. **Reports and Presentations (May Require Committee Action)**
9. **Member Comments**
10. **Distribution Items (No presentation)**
  - A. CMP Newsletter
  - B. CMP Survey
11. **Next Meeting Date:**

*Next Meeting Date: March 18, 2020 at 2 p.m.*
12. **Adjournment**

**PLEASE NOTE:**

*This meeting of the Congestion Management Committee (CMC) of the Collier Metropolitan Planning Organization (MPO) is open to the public and citizen input is encouraged. Any person wishing to speak on any scheduled item may do so upon recognition of the Chairperson. Any person desiring to have an item placed on the agenda shall make a request in writing with a description and summary of the item, to the MPO Director or CMC Committee Chair 14 days prior to the date of the next scheduled meeting of the CMC. Any person who decides to appeal a decision of this Committee will need a record of the proceedings pertaining thereto, and therefore may need to ensure that a verbatim record of the proceeding is made, which record includes the testimony and evidence upon which the appeal is to be based. In accordance with the Americans with Disabilities Act, any person requiring special accommodations to participate in this meeting should contact the Collier Metropolitan Planning Organization 72 hours prior to the meeting by calling (239) 252-5884. The MPO's planning process is conducted in accordance with Title VI of the Civil Rights Act of 1964 and Related Statutes. Any person or beneficiary who believes that within the MPO's planning process they have been discriminated against because of race, color, religion, sex, age, national origin, disability, or familial status may file a complaint with the Collier MPO by calling MPO Executive Director, Anne McLaughlin at (239) 252-5884 or by writing to Ms. McLaughlin at 2885 South Horseshoe Dr., Naples, FL 34104.*

**CONGESTION MANAGEMENT COMMITTEE OF THE  
COLLIER METROPOLITAN PLANNING ORGANIZATION  
MAIN CONFERENCE ROOM  
2885 SOUTH HORSESHOE DRIVE, NAPLES, FL 34104**

**September 18, 2019 2:00 P.M.  
Meeting Minutes**

**1. Call to Order**

**Mr. Khawaja** called the meeting to order at approximately 2:02 p.m.

**2. Roll Call**

**Ms. McLaughlin** called roll and confirmed a quorum was present.

**CMC Members Present**

Tony Khawaja, Chairman, Collier County Traffic Operations  
Karen Homiak, Citizen Advisory Committee (CAC)  
Representative Alison Bickett, City of Naples  
Tim Pinter, City of Marco Island, Vice-Chairman  
Dr. Mort Friedman, Bicycle Pedestrian Advisory Committee (BPAC) Representative  
Dave Rivera, City of Naples

**Members Absent**

Dan Summers, Collier County Emergency Management  
Omar Deleon, Public Transit Neighborhood Enhancement  
Ian Barnwell, Collier County Transportation Planning  
(CCTP) John Kasten, Collier County School District

**MPO Staff**

Anne McLaughlin, MPO Executive Director

**FDOT**

Victoria Peters, FDOT

**Others Present**

Pierre-Marie Beauvoir, Collier Traffic Operations  
Trinity Scott, CCTP  
Wally Blain, Sr. Project Manager Tindale Oliver

**3. Approval of the Agenda**

*Mr. Khawaja moved to approve the agenda. Second by Mr. Rivera. Carried unanimously.*

**4. Approval of the March 20, 2109 Meeting Minutes**

*Mr. Khawaja moved to approve the agenda. Second by Ms. Bickett. Carried unanimously.*

**5. Public Comments for Items not on the Agenda**

None

**6. Agency Updates**

**A. FDOT**

**Ms. Peters** provided updates:

- Public Meeting to be held on October 10, 2019 from 4:30pm – 6:30pm at UF/IFAS Ext. Office, 14700 Immokalee Rd., Naples regarding FDOT construction at SR82 to Gator Slough. This is the last segment of construction not including the roundabout. Final phase of construction had been pushed out because of utility concerns so the purpose of this meeting is FDOT staff, project managers and engineers will be present to meet with community and answer questions.
- E-Public Hearing Week October 21-25. The new FY25 New Draft Tentative Work program will be placed online showing new fiscal year projects for FY25, in addition to other projects being advanced and projects in earlier years. Draft plan will be placed online along with a comment card. In addition, a public outreach meeting will be held on October 21, 2019 from 12 p.m. - 3 p.m. at the Orange Blossom Library (2385 Orange Blossom Dr, Naples, FL 34109). Ms. Peters and Mr. Eric Ortman will be available at this meeting for community outreach & comments.
- Ms. Peters noted that the Stormwater Drainage from Golden Gate Parkway to 5<sup>th</sup> Ave, including complete streets, is under consideration and being discussed, more discussions and decisions will be made over the next year.

**B. MPO Executive Director**

**Ms. McLaughlin** - no report other than what is in the agenda.

**C. Other**

- **Mr. Rivera** stated that the 8<sup>th</sup> Street project has two phases. Phase 1 is 80% done, from 5<sup>th</sup> Ave South to Central, to be completed by October 31, 2019. Phase 2 to begin April 2020, including Central to 7<sup>th</sup> Ave, includes sidewalks, lighting, bike lanes, trees, and also a roundabout.
- **Mr. Pinter** announced the new City Manager for Marco Island, Mike McNeese. Briefly discussed 5 new shared use path projects, two are currently out for bid, three are in design. Announced that a new signal has been added at the Hilton, funded partially by Marco Crystal Shores as part of their development agreement, contributing \$300K of the \$350K total cost.
- **Mr. Beauvoir** stated that a series of BlueTOAD devices have been implemented along U.S. 41 from Old 41 to Pine Ridge Road, and at US 41 and Collier, a total of 7 devices. Currently using the devices to gather data about travel times.
- **Mr. Rivera** stated that the City of Naples and Collier County are working together on LPR (License Plate Readers) being installed on Golden Gate Parkway at Bear's Paw and Goodlette Road.

**7. Committee Action**

**A. Review and Endorse Substitute Adaptive Traffic Control System Project**

**Mr. Khawaja** stated that the previously submitted Adaptive Traffic Control System (ATCS) project on Pine Ridge Rd would be redundant with County/FDOT larger projects and should be replaced with the new Santa Barbara/Golden Gate Parkway Proposal included in the agenda. Construction (\$115K) and Preliminary Engineering (PE) costs (\$778K) are \$898K. **Ms. Bickett** pointed out that the project proposal still references Pine Ridge Road and should be revised.

*Mr. Pinter moved to replace the Pine Ridge Rd. project with Santa Barbara Blvd./Golden Gate Pkwy. proposal, Dr. Friedman seconded. All members approved the vote unanimously.*

**B. Review and Endorse 2019 Project Priorities List**

**Mr. Khawaja** presented the 2019 Project Priorities List for review. **Ms. McLaughlin** stated that the scope of the Golden Gate Project (Item #5 on Priority list) has changed, and asked for **Ms. Peters** to confirm that FDOT is still in approval. **Ms. Peters** stated that FDOT has reviewed and the project is now design/build as it has gone over the \$1M threshold, and FDOT has agreed to take on the project. Upon review, schedule includes the 2023 for design, the 2025 for right-of-ways, and the 2027 for construction.

*Mr. Rivera moved to approve the list of priorities; Mr. Pinter seconded. All members approved the vote unanimously.* **Ms. McLaughlin** stated that the priority list will be presented to the MPO Board in October.

## **8. Reports and Presentations**

### **A. Transportation System Performance Report**

**Mr. Blain** with Tindale Oliver introduced himself and updated the committee on the project and identified project tasks. The first official project update will be at the November meeting, attendance at today's meeting is an informational check-in to gather feedback. Tindale Oliver is currently identifying data gaps, addressing new topics in mobility – promoting transit systems, alternative methods of transit such as biking, addressing the movement of freight & goods. Additionally, Tindale Oliver has identified social media as a gap to be further utilized. **Mr. Khawaja** noted that there always a desire to share more with the public. **Mr. Blain** stated the MPO does not have social accounts but is working through the Collier County accounts and Tindale Oliver will be considering alternative outreach methods. Tindale Oliver will also be conducting a public survey to ask for congestion and travel feedback. **Mr. Khawaja** stated that Google data is being purchased to collect travel times and compare against BlueTOAD data. Tindale Oliver is also creating a GIS network for the MPO (item 8A, attachment 4). **Mr. Blain** asked the committee members to provide feedback on the creation of segments against the AUIR report as it works into the congestion analysis.

## **9. Member Comments None**

## **10. Distribution Items None**

## **11. Next Meeting Date Regular Meeting – November 20, 2019**

## **12. Adjourn** With no further comments Mr. Khawaja adjourned the meeting at approximately 3:15 p.m.

**COMMITTEE ACTION**  
**ITEM 7A**

**Election of Chair and Vice-Chair**

---

**OBJECTIVE:** For the Committee to elect a Chair and Vice-Chair for calendar year 2020.

**CONSIDERATIONS:** The CMC by-laws state that the Committee shall elect a Chair and Vice-Chair at the first regularly scheduled meeting of each year when a quorum is attained.

Any committee member may nominate or be nominated as Chair/Vice-Chair. Elections shall be decided by the majority vote of committee members present. The Chair and Vice-Chair shall serve a one-year term or until a successor is elected. Tony Khawaja is the current Chair and Tim Pinter is Vice-Chair.

**STAFF RECOMMENDATION:** That the Committee elect a Chair and Vice-Chair for calendar year 2020.

Prepared By: Brandy Otero, Principal Planner

**COMMITTEE ACTION**  
**ITEM 7B**

**Endorse Transportation System Performance Report Objectives and Congestion Management Process (CMP) Network Methodology**

---

**OBJECTIVE:** For the committee to receive an update on the consultant's progress; review and endorse the CMP Objectives and the methodology used to develop the Congestion Management Process (CMP) network.

**CONSIDERATIONS:** The Congestion Management Process 2017 Update (2017 CMP Update) calls for the preparation of a Biennial Transportation System Performance (TSP) Report. Tindale Oliver will provide an update to the Congestion Management Committee for the TSP Report.

As part of the data gap analysis for the CMP, it was noted that the objective included in the 2017 Update could be revised to include a more comprehensive evaluation of congestion and alternative strategies. The expanded CMP Objectives are provided as **Attachment 1**. Additionally, a series of congestion measures have been developed for the purpose of reporting system conditions during the TSP updates and are proposed considerations when evaluating individual projects for funding through the CMP Box Funds.

The consultant has continued development of the CMP Network and congestion analysis. A methodology describing the development of the CMP Network and the calculation of congested conditions is provided as **Attachment 2**. The network was developed based on 2018 traffic counts and the FDOT Generalized Level of Service Capacities. The resulting 2024 (Existing plus Committed) congestion analysis is listed in **Attachment 3** and the accompanying map as **Attachment 4**.

**STAFF RECOMMENDATION:** That the committee endorse the CMP Objectives and the methodology used to develop the CMP network.

Prepared By: Brandy Otero, Collier MPO Principal Planner

Attachment(s):

1. CMP Objectives
2. CMP Network and Congestion Methodology
3. Table of 2023 Existing plus Committed CMP Network segments and Level of Service
4. Map of 2023 Existing plus Committed CMP Level of Service

## **Goal**

Improve Collier County's transportation system performance and reliability through mitigating congestion and improving the safety and mobility of people and goods

## **2019/2020 CMP Objectives**

**Objective 1:** Promote transportation investments that support the Long Range Transportation Plan's priorities, goals and objectives.

**Objective 2:** Integrate the Congestion Management Process and its proposed improvements into the Long Range Transportation Plan, the Transit Development Plan (TDP), the Bicycle and Pedestrian Master Plan, and support the integration of transportation and land use.

**Objective 3:** Develop, maintain, expand and close gaps in pedestrian, bicycle and shared use path facility network for efficient and safe movement of people. Connect these pedestrian and bicycle facilities to existing and future transit stops.

**Objective 4:** Reduce vehicle miles traveled (VMT) by encouraging alternative modes of transportation, supporting sustainable land use development, and creating an integrated multi-modal transportation system.

**Objective 5:** Optimize movement of goods.

**Objective 6:** Improve the safety of the transportation facilities.

## **Congestion Measures**

### Volume/Capacity

- Percent of Roadway Miles by V/C
- Percent of Vehicle Miles Traveled by V/C

### Travel Time Reliability

- Travel speed (miles per hour)
- Average delay time (the difference between travel time and acceptable or free-flow travel time)
- Travel time index (ratio of peak-period to non-peak-period travel time)
- Average regional commute time (by mode)

### Transit Travel

- Average bus route service frequency and number of routes
- Passenger Trips (Annual Ridership)
- Passenger Trips per Revenue Hour
- Transit on-time performance

### Pedestrian/ Bicycle Path Facilities

- Centerline miles of bicycle lanes
- Linear miles of connector sidewalks on arterial roadways
- Linear miles of Shared Use Paths adjacent to roadways

## Goods Movement

- Vehicle Miles Traveled (VMT) on designated truck routes with V/C greater than 1.0
- Number of Crashes Involving Heavy Vehicles/ Trucks

## Safety

- Total Crashes
- Motor vehicle severe injury crashes
- Motor vehicle fatal crashes
- Pedestrian and bicycle severe injury and fatal crashes

## Transportation Demand Management

- Number of registered carpool/ vanpool and riders through the FDOT Commute Connector Program
- Number of MPO/County/City outreach efforts and campaigns to raise awareness about existing multimodal transportation options in the area
- Number of employers/ employees participating in alternative work hours/ telecommuting

## Accessibility

- Share of regional jobs within ¼ mile of transit
- Share of regional households within ¼ mile of transit

## Incident Duration

- Mean time for responders to arrive on-scene after notification
- Mean incident clearance time
- Road Ranger stops

## **Review of 2017 CMP Measures**

### CMS/ITS Operations:

- Maintaining concurrency with FDOT Regional ITS Architecture and technological advances in TOC equipment and operations
  - *This could be included as a “yes/no” measure (related to objectives 1, 2, and 5) or be included as a part of the project selection/prioritization (CMP Step 7).*
- Increased number of signalized intersections connected to ITS
  - *This measure could be added related to objective 5.*
- Improved Travel Time Reliability
  - *Travel time reliability measures are included.*

### Capacity Enhancement

- Identify current benchmark thresholds of current Level of Service (LOS) on arterial road segments and at intersections in the biennial Transportation System Performance Report
  - *Measured with the V/C ratio. Capacity is based on the adopted LOS standard/threshold*
- Establish post-construction LOS performance during the peak season for completed projects; include analysis of new developments that may have come on-line during the same time period; report on whether LOS improved or declined post-construction; comment on results
  - *Should be included in strategy evaluation step (Step 8) of the CMP.*

### Transit:

- Increased ridership on existing routes,
  - *Measure is included*



- Increased number of riders identified at specific transit stops before/after installation of shelters
  - *Should be included in strategy evaluation step (Step 8) of the CMP.*
- Improved bicycle/pedestrian connections to bus shelters, inclusive of meeting ADA requirements
  - *Removed based on the data analysis needed for reporting.*

#### Nonmotorized Transportation:

- Reduction in the miles of gaps in the cycling network identified in the Comprehensive Pathways Plan (CPP) 2017/18 Update (to be incorporated by reference upon adoption)
  - *Measure is included*
- Address problem areas specifically identified for bicycle/pedestrian network connections in recent and future Bicycle/Pedestrian Safety Studies, Community Walkability Studies and Bicycle/Pedestrian Safety Audits
  - *This should be included as part of the project selection/prioritization (CMP Step 7).*

#### Customer Service

- Report on nature of comments/responses and whether numbers indicate an increase in customer satisfaction - comments/responses to County congestion management website.
  - *This could be included as a measure related to all the objectives.*

### **CMP Network and Congestion Methodology**

The following outlines the steps and sources used in developing the CMP network and the assumptions applied for defining the congested conditions.

1. Define Segments
  - Include roadways identified as collectors and arterials on the Federally Functionally Classified Maps.
  - Develop segments using the FDOT District 1 LOS Spreadsheet, Collier County AUIR, and Naples Transportation Element
2. Assign Traffic Counts to CMP Network Segments using
  - FDOT Online Traffic Information Database
  - Collier AUIR
  - Naples Quarterly Traffic Counts
  - Determine preferred traffic count if multiple agencies had overlapping counts.
3. Assignment of Service Volumes (capacities)
  - Assign roadway segment classifications based on FDOT LOS Handbook and functional classifications.
  - LOS standards based on local agency Comprehensive Plan policies
  - Analysis based on peak hour peak direction conditions and available count data.
  - Service volumes assigned consistent with LOS Standard and FDOT Generalized Capacity tables
4. Develop 2024 Existing plus Committed conditions
  - Assign transportation projects programmed in Transportation Improvement Program through 2024.
  - Grow current year traffic volumes based on historic trends.
    - Based on 10-year trend
    - Collier County AUIR growth rates used for Collier County counts
    - Minimum growth rate set at 1% for Naples and State counts
    - Maximum growth rate set at 4% for Naples and State counts
  - Manual adjustments considered for new construction (Vanderbilt Beach Extension)







Collier MPO  
Congestion Management Process Network

2023 Existing + Committed Level of Service Conditions -DRAFT November 2019

1	2	3	4	5	6	7	8	9	10	11	12	13	14	15	16	17	18	19	20
MPO ID	Road Number	On Street	From Street	To Street	Functional Class	Length (miles)	Jurisdiction	Posted Speed	2023 E+C Number of Lanes	LOS Standard (1)	Collier Count Station ID	Naples Count Station ID	FDOT Count Station	2023 E+C AADT (4)	Pk Hr. Pk Dir. Volume (4)	Daily Service Volume	Pk Hr. Pk Dir. Service Volume	Pk Hr. Pk Dir. V/SV Ratio (2)	LOS (3)
640	SR 29	SR 29	US 41 (Tamiami Trail)	CR 837 (Janes Scenic Dr)	Principal Arterial-Other Rural	2.50	State	55	2U	D			30006	1,841	96	14,300	740	0.13	B
641	SR 29	SR 29	CR 837 (Janes Scenic Dr)	Wagon Wheel Rd	Principal Arterial-Other Rural	1.35	State	60	2U	D			30006	1,841	96	14,300	740	0.13	B
642	SR 29	SR 29	Wagon Wheel Rd	I-75	Principal Arterial-Other Rural	13.14	State	60	2U	D			30031	1,623	85	14,300	740	0.12	B
643	SR 29	SR 29	I-75	Oil Well Road	Principal Arterial-Other Rural	10.24	State	60	2U	D			30182	3,521	184	14,300	740	0.25	B
644	SR 29	SR 29	Oil Well Road	Agriculture Way	Principal Arterial-Other Rural	7.89	State	60	2U	D			30205	8,574	448	14,300	740	0.61	D
645	SR 29	SR 29	Agriculture Way	New Harvest Rd	Principal Arterial-Other Rural	1.15	State	45	2U	D			30205	8,574	448	14,200	740	0.61	C
646	SR 29	SR 29	New Harvest Rd	CR 29A South	Principal Arterial-Other Rural	0.66	State	45	2U	D			30002	10,164	532	14,200	740	0.72	C
647	SR 29	SR 29	CR 29A South	1st St	Principal Arterial-Other Urban	0.41	State	35	4D	D	664		30002	15,009	789	32,400	1,630	0.48	D
648	SR 29	SR 29	1st St	9th Street	Principal Arterial-Other Urban	0.50	State	35	4D	D	664		30029	15,009	789	32,400	1,630	0.48	D
649	SR 29	SR 29	9th Street	Immokalee Dr	Principal Arterial-Other Urban	0.87	State	45	2U	D	663		30029	15,644	802	17,700	880	0.91	C
650	SR 29	SR 29	Immokalee Dr	CR 29A North	Principal Arterial-Other Urban	1.18	State	45	2U	D	663		30038	15,644	802	17,700	880	0.91	C
651	SR 29	SR 29	CR 29A North	SR 82	Principal Arterial-Other Rural	2.95	State	60	2U	D	663		30143	15,644	802	23,100	1,200	0.67	C
652	SR 29	SR 29	SR 82	Hendry County Line	Principal Arterial-Other Rural	2.06	State	60	2U	D			30184	6,633	346	14,300	740	0.47	C
660	SR 82	SR 82	Lee County Line	Corkscrew Rd	Principal Arterial-Other Rural	1.70	State	60	2U	D			30183	14,738	770	14,300	740	1.04	E
661	SR 82	SR 82	Corkscrew Rd	SR 29	Principal Arterial-Other Rural	5.36	State	60	2U	D			30200	14,989	783	14,300	740	1.06	E
670	US 41	Tamiami Trail East	Davis Boulevard	Airport Road	Principal Arterial-Other Urban	1.26	State	45	6D	E	545		35001	37,244	2,120	59,900	3,020	0.70	C
671	US 41	Tamiami Trail East	Airport Road	Rattlesnake Hammock Road	Principal Arterial-Other Urban	1.69	State	45	6D	E	604		30094	58,560	3,013	59,900	3,020	1.00	D
672	US 41	Tamiami Trail East	Rattlesnake Hammock Road	Treetops Dr	Principal Arterial-Other Urban	2.45	State	55	6D	E	572		30015	41,324	2,142	59,900	3,020	0.71	C
673	US 41	Tamiami Trail East	Treetops Dr	Triangle Boulevard	Principal Arterial-Other Urban	1.69	State	55	6D	E	572		30014	41,324	2,142	59,900	3,020	0.71	C
674	US 41	Tamiami Trail East	Triangle Boulevard	Collier Boulevard	Principal Arterial-Other Urban	0.30	State	45	6D	E	571		30014	38,386	1,877	59,900	3,020	0.62	C
675	US 41	Tamiami Trail East	Collier Boulevard	Imperial Wilderness Blvd	Principal Arterial-Other Urban	2.64	State	60	6D	D	608		30194	22,640	1,093	59,900	3,020	0.36	C
676	US 41	Tamiami Trail East	Imperial Wilderness Blvd	Joseph Lane	Principal Arterial-Other Urban	0.27	State	60	6D	D	608		30005	22,640	1,093	59,900	3,020	0.36	C
677	US 41	Tamiami Trail East	Joseph Lane	Greenway Road	Principal Arterial-Other Rural	0.48	State	60	4D	D	608		30005	22,640	1,093	39,800	2,000	0.55	C
678	US 41	Tamiami Trail East	Greenway Road	Royal Hammock Blvd	Principal Arterial-Other Rural	2.33	State	60	2U	D	608		30005	22,640	1,093	24,400	1,200	0.91	D
679	US 41	Tamiami Trail East	Royal Hammock Blvd	San Marco Drive	Principal Arterial-Other Rural	2.43	State	60	2U	D	608		30005	22,640	1,093	14,300	740	1.48	E
680	US 41	Tamiami Trail East	San Marco Drive	Brewski Canal (Port of The Islands)	Principal Arterial-Other Rural	5.83	State	60	2U	D			30111	3,919	204	14,300	740	0.28	B
681	US 41	Tamiami Trail East	Brewski Canal (Port of The Islands)	SR 29	Principal Arterial-Other Rural	9.91	State	60	2U	D			30111	3,919	204	14,300	740	0.28	B
682	US 41	Tamiami Trail East	SR 29	Turner River Rd	Principal Arterial-Other Rural	6.68	State	60	2U	D			30104	3,237	169	14,300	740	0.23	B
683	US 41	Tamiami Trail East	Turner River Rd	Loop Rd	Principal Arterial-Other Rural	10.30	State	60	2U	D			30270	3,022	158	14,300	740	0.21	B
684	US 41	Tamiami Trail East	Loop Rd	Dade County Line	Principal Arterial-Other Rural	15.33	State	60	2U	D			30011	2,312	121	14,300	740	0.16	B
690	US 41	Tamiami Trail North	SR 84 (Davis Blvd)	CR 851 (Goodlette Rd South)	Principal Arterial-Other Urban	0.55	State	35	8D	E			30124	56,860	2,866	68,100	3,420	0.84	D
691	US 41	Tamiami Trail North	CR 851 (Goodlette Rd South)	12th Ave	Principal Arterial-Other Urban	1.66	State	30	6D	E			35007	36,965	1,863	50,900	2,560	0.73	D

**Collier MPO  
Congestion Management Process Network**

**2023 Existing + Committed Level of Service Conditions -DRAFT November 2019**

1	2	3	4	5	6	7	8	9	10	11	12	13	14	15	16	17	18	19	20
MPO ID	Road Number	On Street	From Street	To Street	Functional Class	Length (miles)	Jurisdiction	Posted Speed	2023 E+C Number of Lanes	LOS Standard (1)	Collier Count Station ID	Naples Count Station ID	FDOT Count Station	2023 E+C AADT (4)	Pk Hr. Pk Dir. Volume (4)	Daily Service Volume	Pk Hr. Pk Dir. Service Volume	Pk Hr. Pk Dir. V/SV Ratio (2)	LOS (3)
692	US 41	Tamiami Trail North	12th Ave	Park Shore Dr / Cypress Woods Dr	Principal Arterial-Other Urban	2.12	State	45	6D	E			35011	39,938	2,013	59,900	3,020	0.67	C
693	US 41	Tamiami Trail North	Park Shore Dr / Cypress Woods Dr	Pine Ridge Rd / Seagate Dr	Principal Arterial-Other Urban	1.28	State	45	6D	E			30003	41,955	2,114	59,900	3,020	0.70	C
694	US 41	Tamiami Trail North	Pine Ridge Rd / Seagate Dr	Gulf Park Drive	Principal Arterial-Other Urban	1.43	State	45	6D	E	562		30012	45,145	2,445	59,900	3,020	0.81	C
695	US 41	Tamiami Trail North	Gulf Park Drive	Vanderbilt Beach Road	Principal Arterial-Other Urban	1.27	State	55	6D	E	563		30017	53,658	2,716	59,900	3,020	0.90	C
696	US 41	Tamiami Trail North	Vanderbilt Beach Road	Immokalee Road	Principal Arterial-Other Urban	1.51	State	50	6D	E	577		30192	39,664	2,120	59,900	3,020	0.70	C
697	US 41	Tamiami Trail North	Immokalee Road	Wiggins Pass Road	Principal Arterial-Other Urban	1.52	State	55	6D	E	564		30018	52,369	3,312	59,900	3,020	1.10	F
698	US 41	Tamiami Trail North	Wiggins Pass Road	Old US 41	Principal Arterial-Other Urban	0.23	State	55	6D	E	546		30018	44,640	2,484	59,900	3,020	0.82	C
699	US 41	Tamiami Trail North	Old US 41	Lee County Line	Principal Arterial-Other Urban	1.30	State	55	6D	E	546		30179	44,640	2,484	59,900	3,020	0.82	C
700		Thomasson Drive	Bayshore Drive	US 41 (Tamiami Trail)	Major Collector Urban	1.27	Collier	45	2U	D	698			12,750	649	15,930	792	0.82	C
710	CR 862	Vanderbilt Beach Road	Gulfshore Drive	US 41 (Tamiami Trail)	Major Collector Urban	1.00	Collier	35	2U	E	524			19,915	1,093	14,040	720	1.52	F
711	CR 862	Vanderbilt Beach Road	US 41 (Tamiami Trail)	Goodlette-Frank Road	Major Collector Urban	0.93	Collier	45	6D	D	646			36,326	1,794	59,900	3,020	0.59	C
712	CR 862	Vanderbilt Beach Road	Goodlette-Frank Road	Airport Road	Major Collector Urban	1.20	Collier	45	6D	D	666			42,924	2,227	59,900	3,020	0.74	C
713	CR 862	Vanderbilt Beach Road	Airport Road	Livingston Road	Major Collector Urban	1.01	Collier	45	6D	E	579			33,614	2,164	59,900	3,020	0.72	C
714	CR 862	Vanderbilt Beach Road	Livingston Road	Logan Blvd	Major Collector Urban	2.15	Collier	45	6D	E	668			40,310	2,634	59,900	3,020	0.87	C
715	CR 862	Vanderbilt Beach Road	Logan Blvd	Collier Blvd	Major Collector Urban	1.88	Collier	55	6D	E	580			28,940	1,866	59,900	3,020	0.62	C
720		Vanderbilt Beach Road Extension	Collier Blvd	Wilson Blvd	Future Designation	5.04	Collier		4D	D	Estimate			20,000	1,026	52,400	2,730	0.38	B
721		Vanderbilt Beach Road Extension	Wilson Blvd	8th St NE	Future Designation	1.01	Collier		2U	D	Estimate			10,000	513	23,100	1,200	0.43	C
722		Vanderbilt Beach Road Extension	8th St NE	16th St NE	Future Designation	1.01	Collier		2U	D	Estimate			10,000	513	23,100	1,200	0.43	C
723		Vanderbilt Beach Road Extension	16th St NE	Everglades Blvd	Future Designation	1.84	Collier		00	D				0	0	0	0	0.00	-
730	CR 901	Vanderbilt Drive	Vanderbilt Beach Rd	111th Avenue	Major Collector Urban	1.34	Collier	25	2U	D			34112	5,431	269	13,320	675	0.40	C
731	CR 901	Vanderbilt Drive	111th Avenue	Wiggins Pass Road	Major Collector Urban	1.49	Collier	45	2U	D	578			N/A	496	15,930	792	0.63	C
732	CR 901	Vanderbilt Drive	Wiggins Pass Road	Bonita Beach Road	Major Collector Urban	2.52	Collier	45	2U	D	548			N/A	496	15,930	792	0.63	C
740		Westclox St/New Market Rd W	Carson Road	SR 29	Major Collector Urban	1.09	Collier	45	2U	D	611			4,419	255	15,930	792	0.32	C
750		White Blvd/23rd/13th St SW/16th	Collier Blvd	Golden Gate Blvd W	Major Collector Urban	6.28	Collier	45	2U	D				0	0	24,200	1,190	0.00	-
760	CR 888	Wiggins Pass Road	Vanderbilt Drive	US 41 (Tamiami Trail)	Major Collector Urban	0.00	Collier	45	2U	D	669			N/A	559	15,930	792	0.71	C
770		Wilson Blvd	Golden Gate Boulevard	Immokalee Road	Major Collector Urban	3.22	Collier	45	2U	D	650			9,074	433	15,930	792	0.55	C
780		Winterberry Drive	S Collier Blvd	S Barfield Dr	Major Collector Urban	1.67	Marco	30	2U	D			34712	5,987	296	13,320	675	0.44	C

**Notes:**

- (1) based on local agency comprehensive plans
- (2) Pk Hr. Pk Dir. V/SV Ratio based on the Pk Hr. Pk Dir. Volume / Pk Hr. Pk Dir. Service Volume. 0.9 - 1.0 Yellow; 1.0 - 1.2 Orange; > 1.2 Red
- (3) LOS Letter grade based on Pk Hr. Pk Dir. Volume and FDOT Generalize Capacity Thresholds for arterial and collector roadways
- (4) assignment of volumes from count stations sources following the color pattern listed below.

Collier County


FDOT


Naples

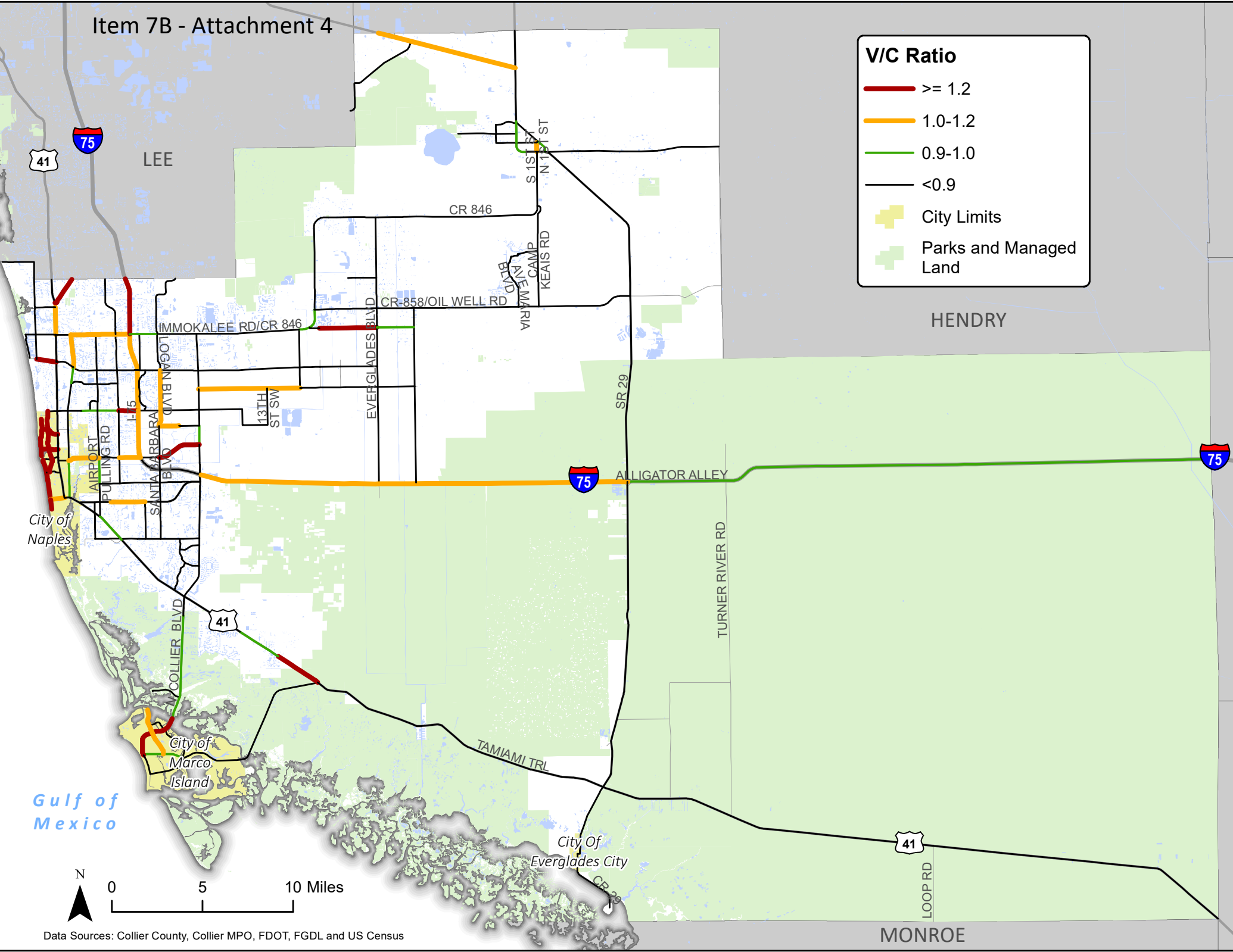
# Item 7B - Attachment 4

**V/C Ratio**

- $\geq 1.2$
- 1.0-1.2
- 0.9-1.0
- $< 0.9$

 City Limits

 Parks and Managed Land



Gulf of Mexico



Data Sources: Collier County, Collier MPO, FDOT, FGDL and US Census

MONROE



**COMMITTEE DISTRIBUTION**  
**ITEM 10A**

**Congestion Management Process (CMP) Newsletter**

---

**OBJECTIVE:** For the Committee to receive a copy of the Congestion Management Process (CMP) Newsletter.

**CONSIDERATIONS:** The CMP newsletter (**Attachment 1**) will be distributed to the public to inform them about the congestion management process.

**STAFF RECOMMENDATION:** For the Committee to receive a copy of the CMP newsletter.

Prepared By: Brandy Otero, Principal Planner

Attachment 1: CMP Newsletter

# COLLIER METROPOLITAN PLANNING ORGANIZATION

## The MPO's Congestion Management Process (CMP)

WINTER 2019 - 2020  
VOLUME 01

### *Eight Actions of the Congestion Management Process*

- 1 Develop Regional Objectives
- 2 Define CMP Network
- 3 Develop Multimodal Performance Measures
- 4 Collect Data/Monitor System Performance
- 5 Analyze Congestion Problems and Needs
- 6 Identify and Assess Strategies
- 7 Program and Implement Strategies
- 8 Evaluate Strategy Effectiveness

## What is a CMP?

A Congestion Management Process (CMP) is a detailed 8-step process that an urban area follows to improve the performance of its transportation system by reducing the negative impacts of traffic congestion. A CMP is developed to improve traffic flow and safety conditions. It seeks to accomplish this by using a combination of strategies that can reduce travel demand, improve traffic operations, or provide options other than driving alone during times when roadways tend to be more congested.

## Why is a CMP Important?

Metropolitan Planning Organizations (MPOs) for areas with more than 200,000 people are required by the federal and state government to develop and implement a CMP. Once in place, the CMP is a valuable tool to help MPOs address traffic congestion and prioritize transportation investments at the regional level. The CMP is a flexible and ongoing process that can be customized to fit the needs of local communities based on feedback and performance over time. A well-rounded CMP provides an opportunity for the MPO and its partners to use all modes of transportation and available technology to address the wasted fuel, time, and money that result from regular traffic congestion.



Visit us at  
[www.colliermpo.org](http://www.colliermpo.org)

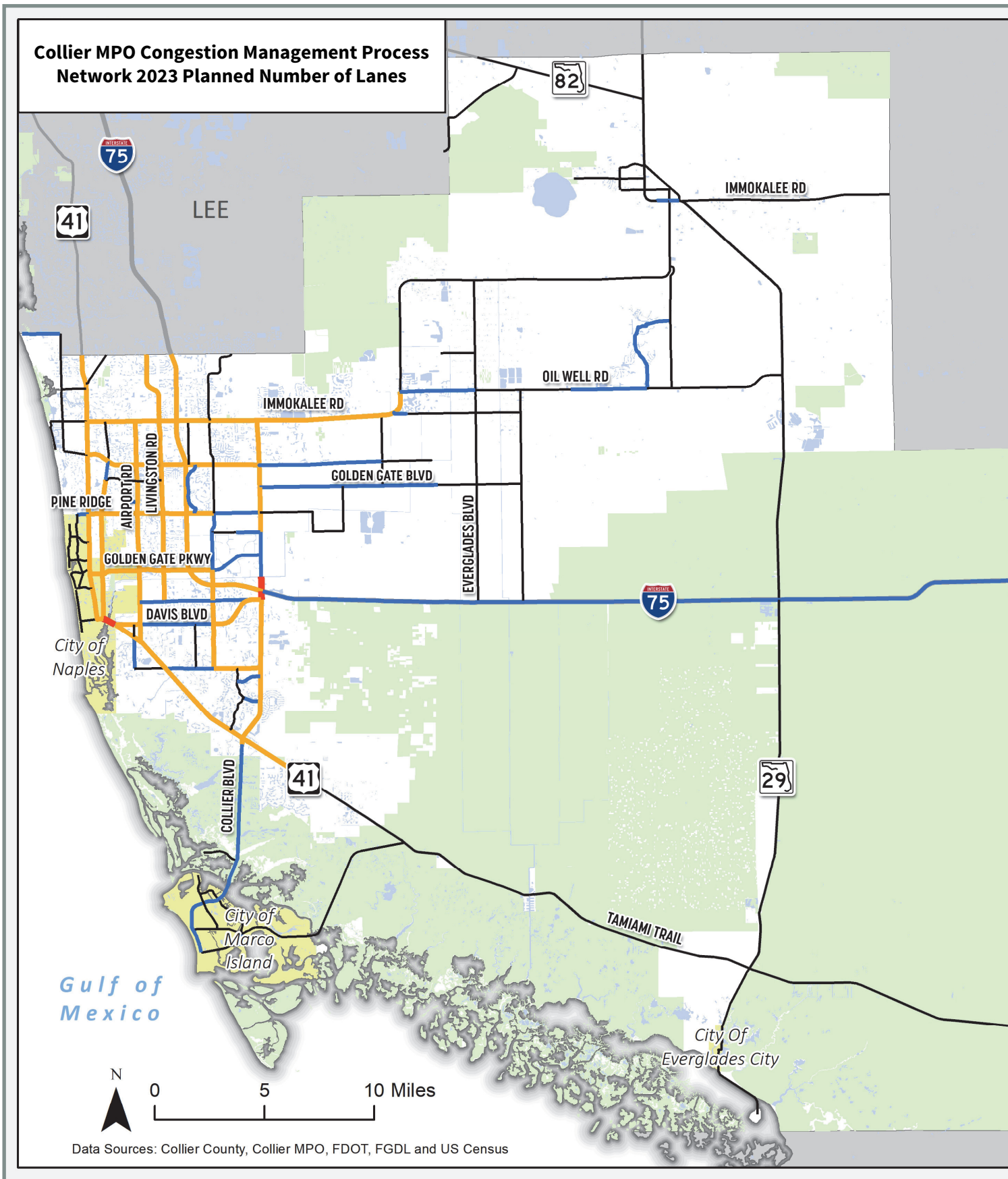
Scan the QR code with your smart phone to  
access our website.

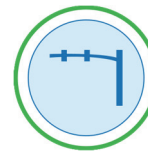
Collier MPO  
2885 S. Horseshow Drive  
Naples, FL 34104  
(239) 252-5814



# INTRAFIC

# The MPO's Congestion Management Process (CMP)

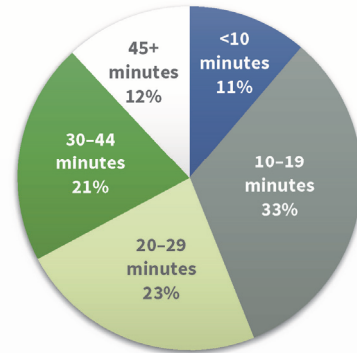




### Did you Know?

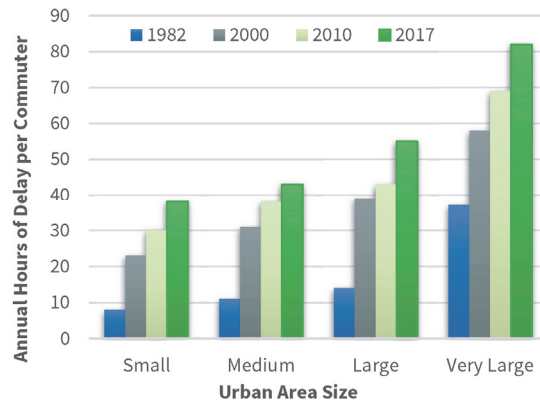
Nearly 2/3 of Collier County workers commute less than 30 minutes to work

Travel Time to Work



Source: 2017 ACS 5-Year Sample

Over the past 35 years congestion has grown significantly in all urban areas.



Small = less than 500,000  
 Medium = 500,000 to 1 million  
 Large = 1 million to 3 million  
 Very Large = more than 3 million  
 \*Collier County falls under the "Small" Designation

Sources: 2019 Urban Mobility Report (Texas A&M Transportation Institute and INRIX)

In 2017, congestion cost the average commuter:



54

Hours



\$1,080

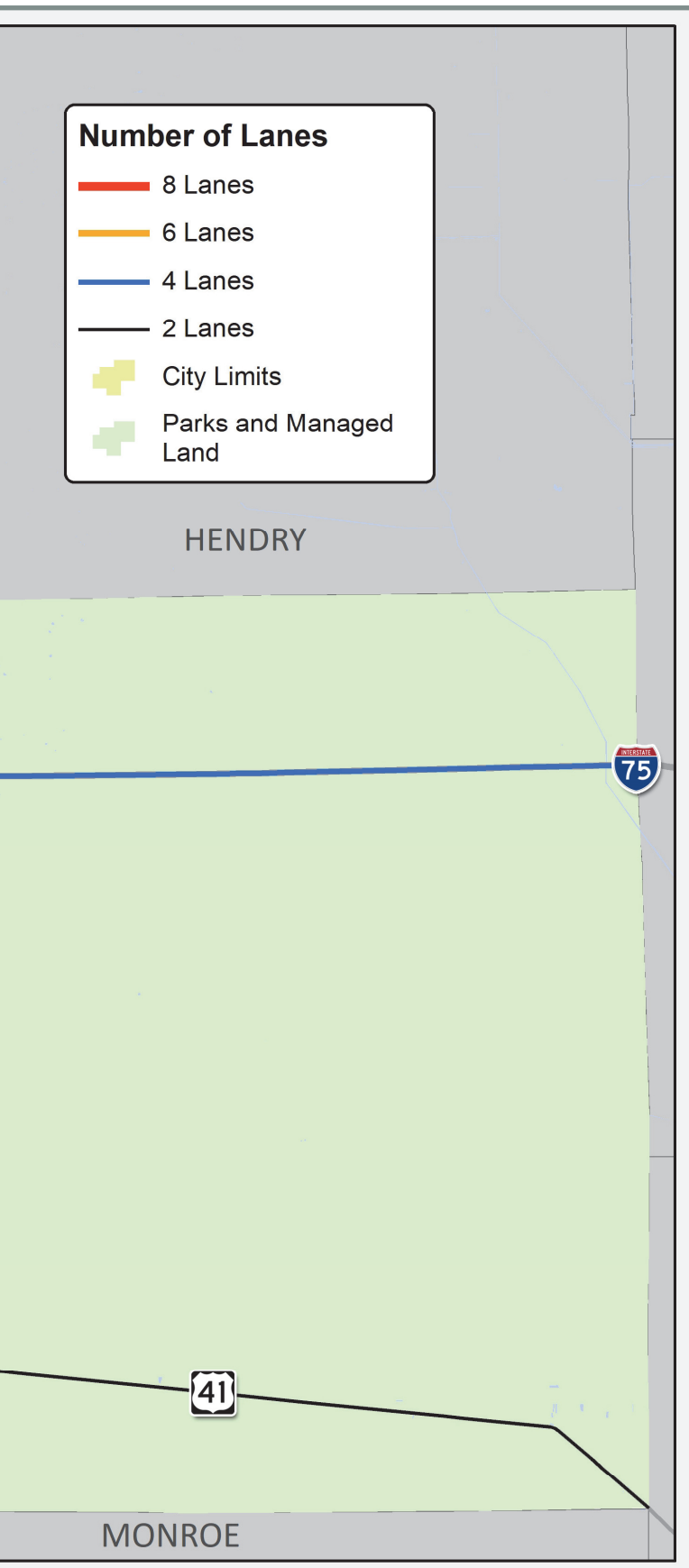
of Lost Time



21

Gallons of Fuel

Sources: 2019 Urban Mobility Report (Texas A&M Transportation Institute and INRIX)



## How Does a CMP Produce Change?

A CMP produces changes by helping an MPO identify a series of multimodal strategies for addressing congestion. It also helps to prioritize the funding needed for specific improvement projects. CMP strategies often result in low-cost projects that can be completed in a short timeframe to begin improving the local transportation network.



## Examples of Potential CMP Strategies:

- Adjustments to traffic signal timings
- Special events management
- Intelligent Transportation System (ITS) equipment / software / technologies
- Construction of turn lanes
- Highway median modifications
- Construction of bicycle and pedestrian (non-motorized) pathways and facilities
- New or enhanced public transportation (transit) services and facilities
- Alternative work hours / telecommuting
- Computerized motorist advisory signage
- Access management plans
- Park-and-ride facilities
- Growth management / land use policies
- Carpool / vanpool programs with preferential parking
- Outreach efforts to raise awareness about existing multimodal transportation options in the area
- Safety improvements
- High-occupancy (HOV) vehicle lanes or managed (tolled) lanes with variable pricing

## How Do I Get Involved?

If you want to learn more about the Collier MPO's efforts to reduce traffic congestion and improve our transportation system, please visit our [www.colliermpo.org](http://www.colliermpo.org)

**We want to hear your feedback!**



# IN TRAFFIC



**COMMITTEE DISTRIBUTION**  
**ITEM 10B**

**Congestion Management Process (CMP) Survey**

---

**OBJECTIVE:** For the Committee to receive a copy of the Congestion (CMP) survey.

**CONSIDERATIONS:** The CMP survey (**Attachment 1**) will be distributed to the public to solicit public input related to congestion in Collier County. The survey has been translated into Spanish and creole.

**STAFF RECOMMENDATION:** For the Committee to receive a copy of the CMP survey.

Prepared By: Brandy Otero, Principal Planner

Attachment 1: CMP Survey



## CONGESTION IN COLLIER COUNTY

### We Want to Hear from You!

The Collier MPO is interested in learning about how traffic congestion impacts you.

Please take our short survey. If you have any questions or comments, please email [Brandy.Otero@colliercountyfl.gov](mailto:Brandy.Otero@colliercountyfl.gov)

### Congestion Levels and Travel Options

1. Which of the following best fits your definition of traffic congestion?
  - a. Long commute times
  - b. Unreliable travel times
  - c. Slow traffic speeds
  - d. High traffic volumes
  - e. Long delays at intersections
  - f. Other (please specify) \_\_\_\_\_
  
2. How would you rate traffic congestion in Collier County?
  - a. Highly congested
  - b. Moderately congested
  - c. Slightly congested
  - d. Not at all congested
  
3. Which of the following do you feel are the most significant causes of traffic congestion in Collier County? (**Please Select 3 Answers**)
  - a. Poor intersection/interchange design
  - b. Lack of dedicated turn lanes
  - c. Construction zones and special events
  - d. Lack of alternative transportation options
  - e. Crashes/traffic incidents
  - f. Seasonal traffic from visitors
  - g. High volume of freight vehicles
  - h. Ineffective traffic signals/poor signal coordination
  - i. Inadequate roadway capacity
  - j. Traffic congestion is not an issue in the region
  - k. Other (please specify) \_\_\_\_\_

4. To reduce traffic congestion, Collier County should prioritize implementing which of the following strategies? **(Please Select 3 Answers)**
  - a. Building dedicated turn lanes
  - b. Improving safety
  - c. Improving incident clearance times
  - d. Improving work zone and special event management
  - e. Improving signal coordination
  - f. Increasing commuter programs (ex. carpool/vanpool) and rideshare options
  - g. Improving public transportation/transit service (ex. bus, shuttle)
  - h. Connecting communities
  - i. Improving bicycle and pedestrian facilities
  - j. Providing timely traveler information
  - k. Improving intersections (ex. adding turn lanes, adding interchanges)
  - l. Other (please specify) \_\_\_\_\_
  
5. Do you feel that you currently have options for commuting to work other than driving alone?
  - a. Yes
  - b. No
  
6. Would you be willing to use an alternative mode of transportation (something other than driving alone in your car) for commuting to/from work if the options were available?
  - a. Yes
  - b. No

If yes, please select all that you would consider:

- a. Public transportation/transit (ex. bus, shuttle)
- b. Bicycle
- c. Electric scooter
- d. Walking
- e. Carpool/vanpool
- f. Telecommute/work from home
- g. Flexible work schedules outside of typical hours
- h. Other (please specify) \_\_\_\_\_



7. Would you be willing to use an alternative mode of transportation (something other than driving alone in your car) for commuting to/from work if your employer made them available or provided incentives to use them?
- a. Yes
  - b. No

If yes, please select all that you would consider:

- a. Public transportation/transit (ex. bus, shuttle) pass or discount
- b. Bicycle parking and/or shower facilities
- c. Free carpool/vanpool programs
- d. Covered or priority parking for carpool/vanpool participants
- e. Telecommute/work from home
- f. Flexible work schedules outside of typical hours
- g. Employer-assisted housing near your work area
- h. Other (please specify) \_\_\_\_\_

8. Do you have the flexibility to adjust the times that you travel to/from work?
- a. Yes
  - b. No

If yes, do you use this option to avoid traffic congestion?

- a. Yes
- b. No

9. Do you have the flexibility to adjust the times that you make recreational trips and/or errands?
- a. Yes
  - b. No

If yes, do you use this option to avoid traffic congestion?

- c. Yes
- d. No

## Demographics and Travel Patterns

10. What is your current home ZIP code? \_\_\_\_\_
  
11. What is your current work ZIP code? \_\_\_\_\_
  
12. Are you a full-time or part-time resident of Collier County?
  - a. Full-time
  - b. Part-time/seasonal
  - c. Neither (I commute to work from another county)
  
13. In which of the following categories does your age fall?
  - a. Younger than 18
  - b. 18 – 24
  - c. 25 – 34
  - d. 35 – 44
  - e. 45 – 54
  - f. 55 – 64
  - g. 65 – 74
  - h. 75 – 84
  - i. 85 or older
  
14. How do you normally travel to work?
  - a. Car, truck, or van (driving alone)
  - b. Carpool/vanpool
  - c. Public transportation/transit (ex. bus, shuttle)
  - d. Walking
  - e. Bicycle
  - f. Electric scooter
  - g. Taxicab or rideshare (ex. Uber, Lyft)
  - h. Telecommute/work from home
  - i. Unemployed or retired
  - j. Other (please specify) \_\_\_\_\_
  
15. What is your usual commute time to work?
  - a. Less than 10 minutes
  - b. 10 to 14 minutes
  - c. 15 to 19 minutes
  - d. 20 to 24 minutes
  - e. 25 to 29 minutes
  - f. 30 to 34 minutes
  - g. 35 or more minutes
  - h. I'm unemployed, retired, or work from home

16. What time do you normally leave home to go to work?

- a. 12:00 am to 4:59 am
- b. 5:00 am to 5:29 am
- c. 5:30 am to 5:59 am
- d. 6:00 am to 6:29 am
- e. 6:30 am to 6:59 am
- f. 7:00 am to 7:29 am
- g. 7:30 am to 7:59 am
- h. 8:00 am to 8:29 am
- i. 8:30 am to 8:59 am
- j. 9:00 am to 11:59 pm
- k. I'm unemployed, retired, or work from home

17. How much time do you spend driving on an average weekday?

- a. Less than 20 minutes
- b. 20 to 29 minutes
- c. 30 to 39 minutes
- d. 40 to 49 minutes
- e. 50 to 59 minutes
- f. 60 to 69 minutes
- g. 70 or more minutes

18. How much time do you spend driving in traffic congestion on an average weekday?

- a. Less than 20 minutes
- b. 20 to 29 minutes
- c. 30 to 39 minutes
- d. 40 to 49 minutes
- e. 50 to 59 minutes
- f. 60 to 69 minutes
- g. 70 or more minutes

19. If you would like to receive email updates from the MPO, please provide your email address below:

---

20. Please share any other thoughts or comments related to traffic congestion in Collier County:

---

---

**Thank you for taking our survey!**